



**Fiable Hydraulics**

ISO 9001:2015 Certified Company

**FIABLE HYDRAULICS PVT .LTD**

[www.fiablehydraulics.in](http://www.fiablehydraulics.in)

# HYDRAULIC POWER UNIT

## HYDRAULICS



# HYDRAULIC POWER UNIT





# HYDRAULIC POWER UNIT

---

About Fiable Hydraulics Pvt. Ltd.

Established in 2017 and headquartered in Pune, Fiable Hydraulics Pvt. Ltd. has steadily evolved into a trusted name in the design, manufacturing, and servicing of high-performance hydraulic systems and components. What began as a modest operation has now grown into a dynamic enterprise catering to a wide range of industrial sectors across India.

From the outset, Fiable has focused on quality, reliability, and customer-centric solutions in hydraulic cylinders, power packs, and material handling systems. Our consistent commitment to technical excellence and customer satisfaction has enabled us to expand our operations and build long-term relationships with clients and partners.

Today, Fiable Hydraulics operates out of a well-equipped facility, delivering solutions that meet global quality standards. Our team of skilled engineers and technicians ensures efficient design, production, and after-sales support, backed by years of practical experience.

By collaborating with industry leaders and maintaining direct access to reputed component manufacturers, we are able to offer high-quality hydraulic products at competitive prices. Through continuous innovation and a deep understanding of our customers' needs, Fiable has earned a strong market reputation for dependable products and responsive service.

With a growing portfolio and an expanding client base, we continue to evolve—driven by technology, guided by experience, and committed to excellence.



## Our Core Areas of Expertise

At Fiable Hydraulics Pvt. Ltd., we specialize in both in-house manufacturing and distribution of a comprehensive range of hydraulic solutions. Our primary areas of focus include:

Custom-designed hydraulic systems

Hydraulic power packs and mini power packs

Hydraulic cylinders tailored to application needs

Filtration units and hose assemblies

Distribution of all essential components used in power hydraulics

We are continually investing in infrastructure, technology, and skill development to enhance our customer service and deliver only high-quality, reliable products.

With upcoming expansions and strategic investments, our goal is to serve you even better and meet your evolving expectations with precision, speed, and professionalism.

## 1. HYDRAULIC POWER PACKS – STANDARD

(Fiable – Standard Series)

Introduction .....	6
Ordering Code .....	6
Hydraulic Schematics .....	7
Special Configurations .....	8
Basic Hydraulic Characteristics .....	8
Hydraulic Performance – Table 1 .....	9
Standard Three-Phase Motors – Table 2 .....	9
Standard Gear Pumps – Table 3 .....	9
Dimensions & Tank Capacities – Steel Construction .....	10
Dimensions & Tank Capacities – Aluminium Construction .....	12
Application Examples .....	14

## 2. HYDRAULIC POWER PACKS – COMPACT

(Fiable – Compact Series)

Introduction.....	16
OrderingCode.....	16
HydraulicSchematic .....	17
Basic HydraulicCharacteristics .....	17
Tank Types&Capacities – Table 2 .....	18
Pump Types&Displacements – Table 3 .....	18
StandardThree-Phase Motors – Table 4 .....	18
HydraulicCharacteristics – Three-Phase AC Motors .....	19
StandardDCMotors – Table 5 .....	19
HydraulicCharacteristics – DC Motors .....	20
Dimensions–DCMotor Version .....	21
Dimensions–Three-Phase AC Motor Version .....	22
ApplicationExamples .....	23





## 1. HYDRAULIC POWER PACKS - STANDARD

*TYPE AH*

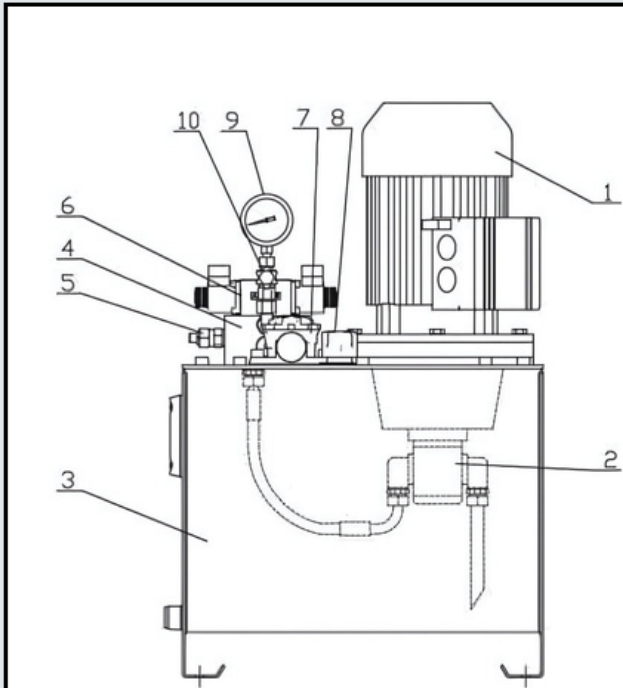
*Main features:*

- Nominal pressure 210bar
- Maximum pressure 350bar
- Electric motors up to 7,5 kW
- Steel or aluminum version
- Tank capacity from 12 to 150 l

Type AH - Introduction

**Application:** Hydraulic power packs AH type are designed to drive and control hydraulic actuators used in mobile and industrial applications. They may be used especially in presses, lifts, cranes, elevators, platforms etc. AH type power packs are available with different assembly variants for electric motors, pumps and tanks.

**Design:** In standard version, AH power pack is composed of vertical motor-pump unit, steel or aluminium reservoir with return filter (with visual clogging indicator), flow and pressure control valves, and solenoid operated directional valve. In order to meet requirements of specific hydraulic systems, standard version may be modified by using additional valves and blocks.



Basic version of AH type power pack is composed of:

- 1 - electric motor
- 2 - hydraulic gear pump
- 3 - oil tank
- 4 - valve manifold
- 5 - relief valve
- 6 - solenoid operated directional control valve (NG6 or NG10)
- 7 - return filter with visual clogging indicator
- 8 - filling plug with air filter
- 9 - pressure gauge
- 10 - pressure gauge's shut-off valve

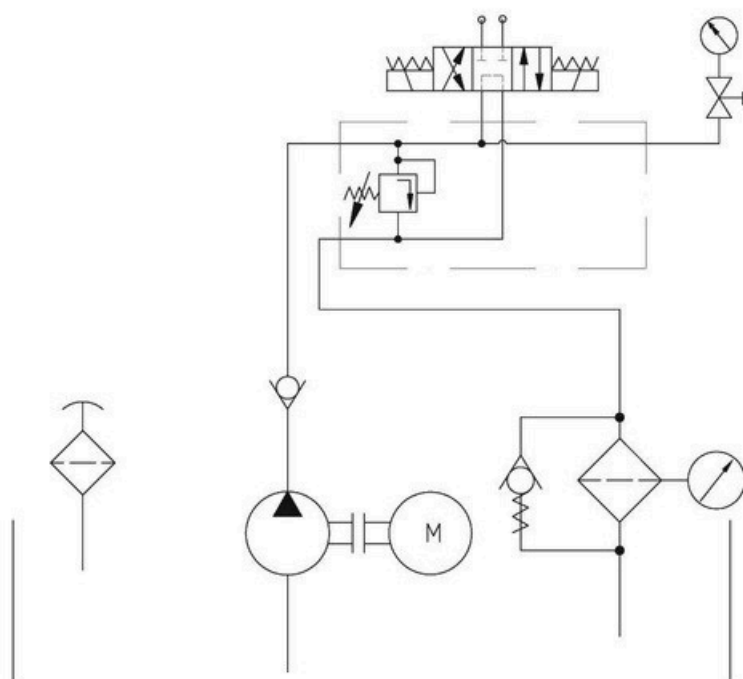
Type AH - Ordering code

AH	-	35	-	4,16	-	1,1	-	XXXX"
Type		Tank Capacity		Pump displacement 3 (cm /rev) (Tab.3)		Power of electric motor (kW)		Design number

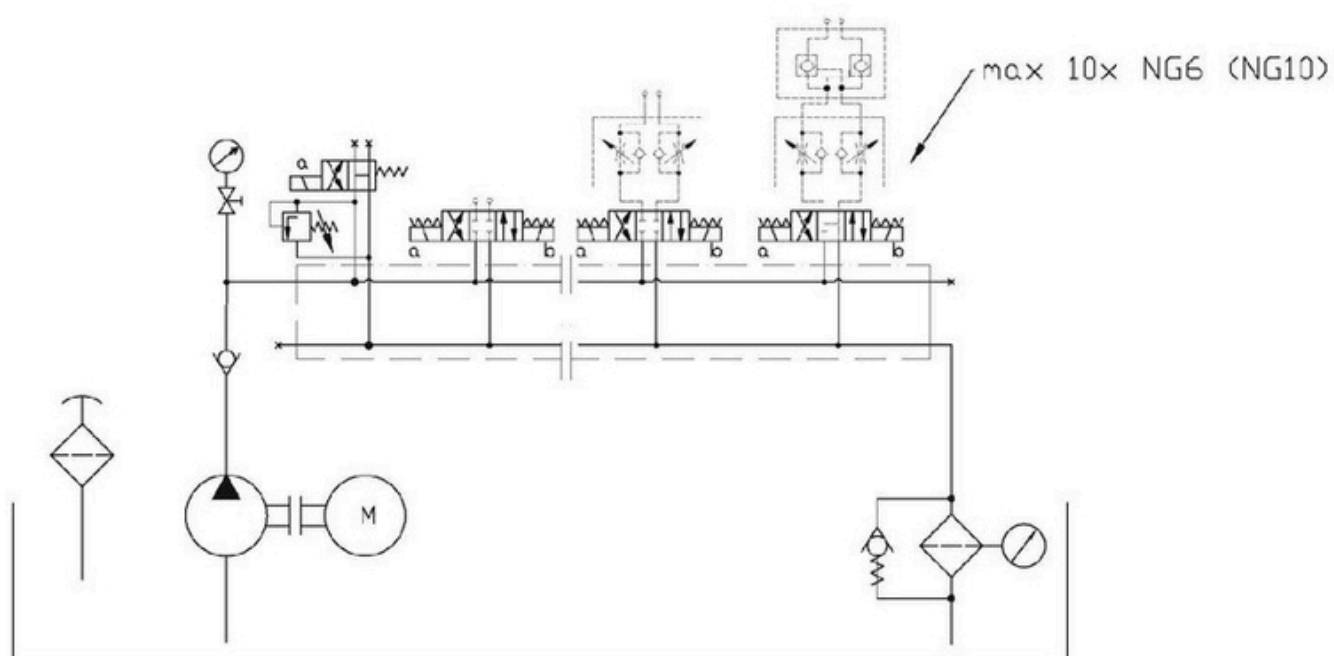
\* Design number is a specific code describing each power unit and it is given by the Technical Department

## Type AH - Hydraulic schemes

## Basic version – with one solenoid operated directional control valve



## Version with a manifold containing 2 or more solenoid operated valves





***Type AH - Special executions***

Basic version may be modified by using monoblock valve or by complete removal of directional valves. On customer's demand or when it is necessary, it is possible to upgrade AH type power pack to special executions as follows:

- 1 - with proportionals
- 2 - with heat exchangers ( coolers and/or heaters)
- 3 - with multiple pumps or several independent pump units
- 4 - with fixed or variable displacement vane or piston pumps
- 5 - with additional hand pump
- 6 - with control valves in sizes: NG 16, NG25, NG 32
- 7 - with optional: pressure switches, transducers, pressure filters
- 8 - with other single-phase motor or DC motors
- 9 - with stainless steel elements

***Type AH - Basic hydraulic characteristics***

Installation position	Horizontal, with vertical motor axis
Ambient temperature	-20°C - +50°C
Recommended temperature	30°C - 50°C
Fluid temperature	-15°C - 70°C
Fluid	Mineral oil type HLP
Recommended viscosity	20mm <sup>2</sup> /s - 100mm <sup>2</sup> /s
Degree of fluid contamination	Class 21/18/15 according to ISO 4406
Electric motor	4-pol., 230/400 V, 400/690 V -50Hz
Pump type	Gear pump
Port sizes	G3/8", G1/2", G3/4"
Tank capacity	Depending on duty cycle and flow level

**Type AH - Hydraulic characteristics - Tab.1**

Pump displacement 3 (cm /rev)	Flow rate at 1450 rpm [l/min]	Maximum pressure [MPa] with motor power of										Suggested unit size
		0,37kW	0,55 kW	0,75kW	1,1kW	1,5kW	2,2kW	3kW	4kW	5,5kW	7,5kW	
1,17	1,7	12	18	22								AH-20-
2,6	3,8	6	8	12	17	22						
4,16	6		5	7,5	11	14	21	23				AH-35-
6,5	9,4		3,5	4,5	7	9,5	14	19	23			
7,54	10,9			4	6	8	12	16	21	23		AH-35-
8,4	12,2				5	7	10,5	14	19	20		
10,8	15,7				4	5,5	8	11	15	15	23	AH-35-
14,4	20,9						6	8	11	13	20	
16,8	24,4						5	7	9	11	17	AH-50-
19,2	27,8							6	8	9	15	
22,8	33,1							5	7	8	13	
26,2	38								6	6,5	11	AH-100/ AH- 150-
32,3	46,8								5	5,5	9	
38,5	55,8									5	7,5	
43,4	63										6,5	
47,2	68,4										6	
50,9	73,8										5,5	

Attention: Following characteristics refer to three-phase motors (Tab.2) and gear pumps (Tab.3). For other configurations, contact our Technical Department

**Type AH - Standard three-phase motors - Tab.2**

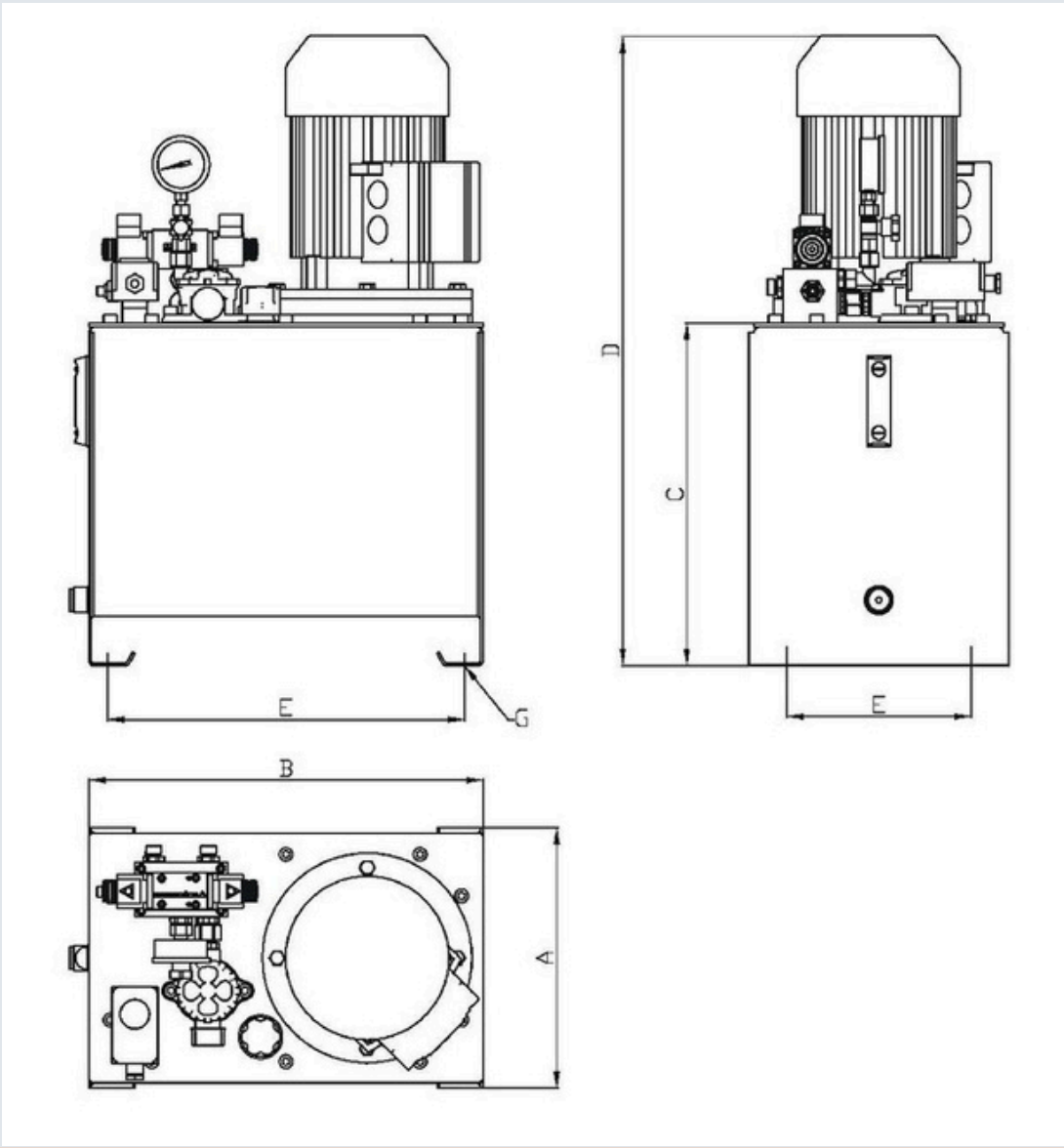
Motor power	0,37 kW	0,55 kW	0,75 kW	1,1 kW	1,5 kW	2,2 kW	3kW	4kW	5,5kW	7,5kW
Nominal voltage	230/400V 50Hz*							400/690V 50Hz*		
Motor size	71	80		90		100		112	132	
Rated speed [rev/min]	1370	1395	1395	1415	1420	1420	1420	1440	1455	1455
Dimension L max	225	252	252	299	299	331	331	352	396	396

**Type AH - Standard gear pumps - Tab.3**

Type	XV-1P/1,2	XV-1P/2,6	XV-1P/3,8	XV-1P/4,3	XV-1P/6,5	XV-1P/7,8	XV-2P/09	XV-2P/11	XV-2P/14
Displacement 3 [cm /rev]	1,17	2,6	3,64	4,16	6,5	7,54	8,4	10,8	14,4
Type	XV-2P/17	XV-2P/19	XV-2P/22	XV-2P/26	XV-3P/32	XV-3P/38	XV-3P/43	XV-3P/47	XV-3P/51
Displacement 3 [cm /rev]	16,8	19,2	22,8	26,2	32,3	38,5	43,4	47,2	50,9

Type AH - Dimensions and tank capacities - Steel execution

Basic version with one solenoid valve\*

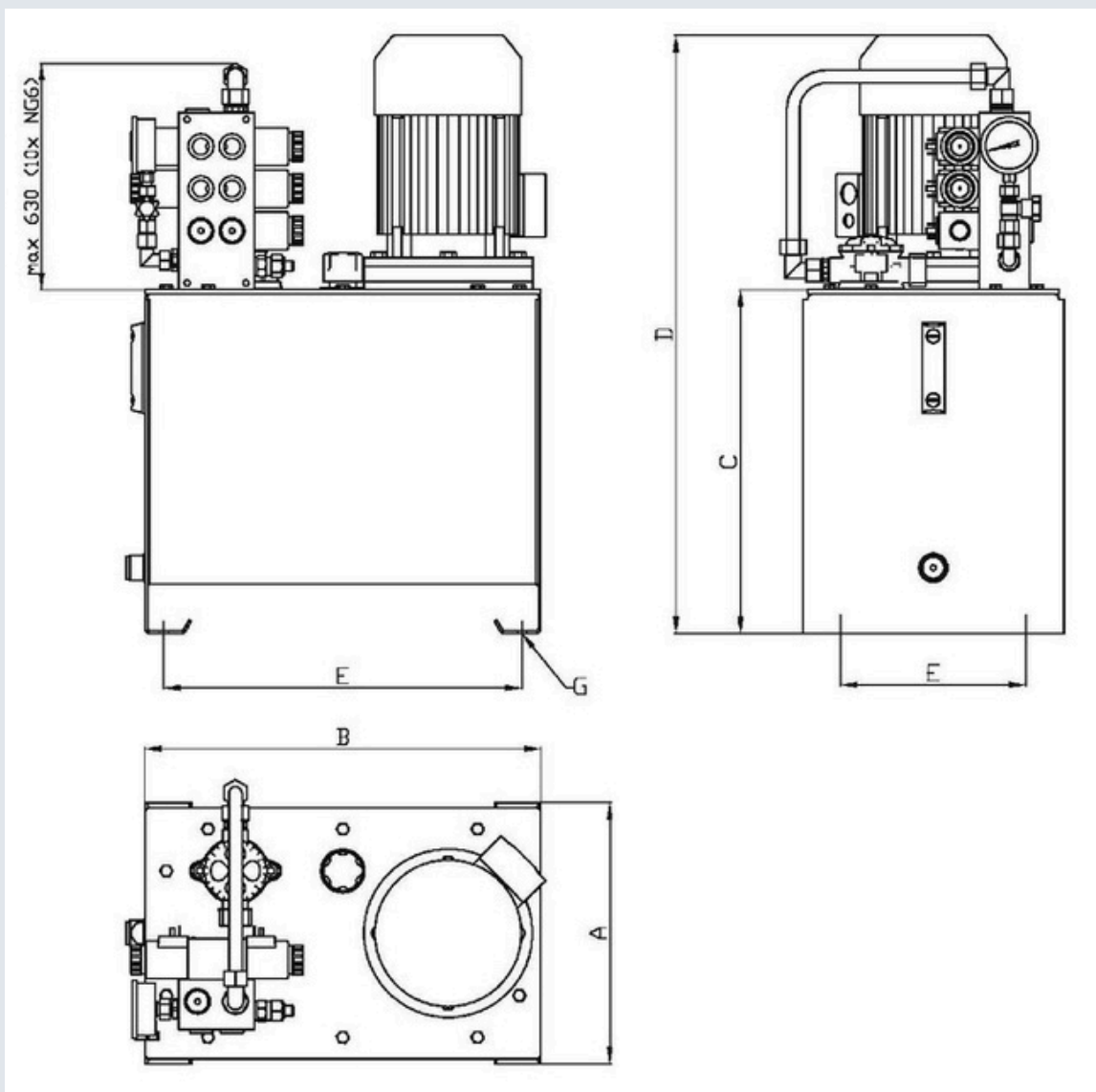


Type	Steel execution (Tab. 1.1)							
	Capacity [L]	A	B	C	Dmax	E	F	G
AH-20	20	310	400	334	C+Lmax (tab.3.)	355	220	11
AH-35	35	310	470	409		425	220	11
AH-50	50	400	500	430		455	310	11
AH-75	85	400	550	541		505	310	11
AH-100	109	400	700	542		655	310	11
AH-150	145	500	750	632		705	410	11



## Type AH - Dimensions and tank capacities - Steel execution

Version with two or more solenoid valves\*

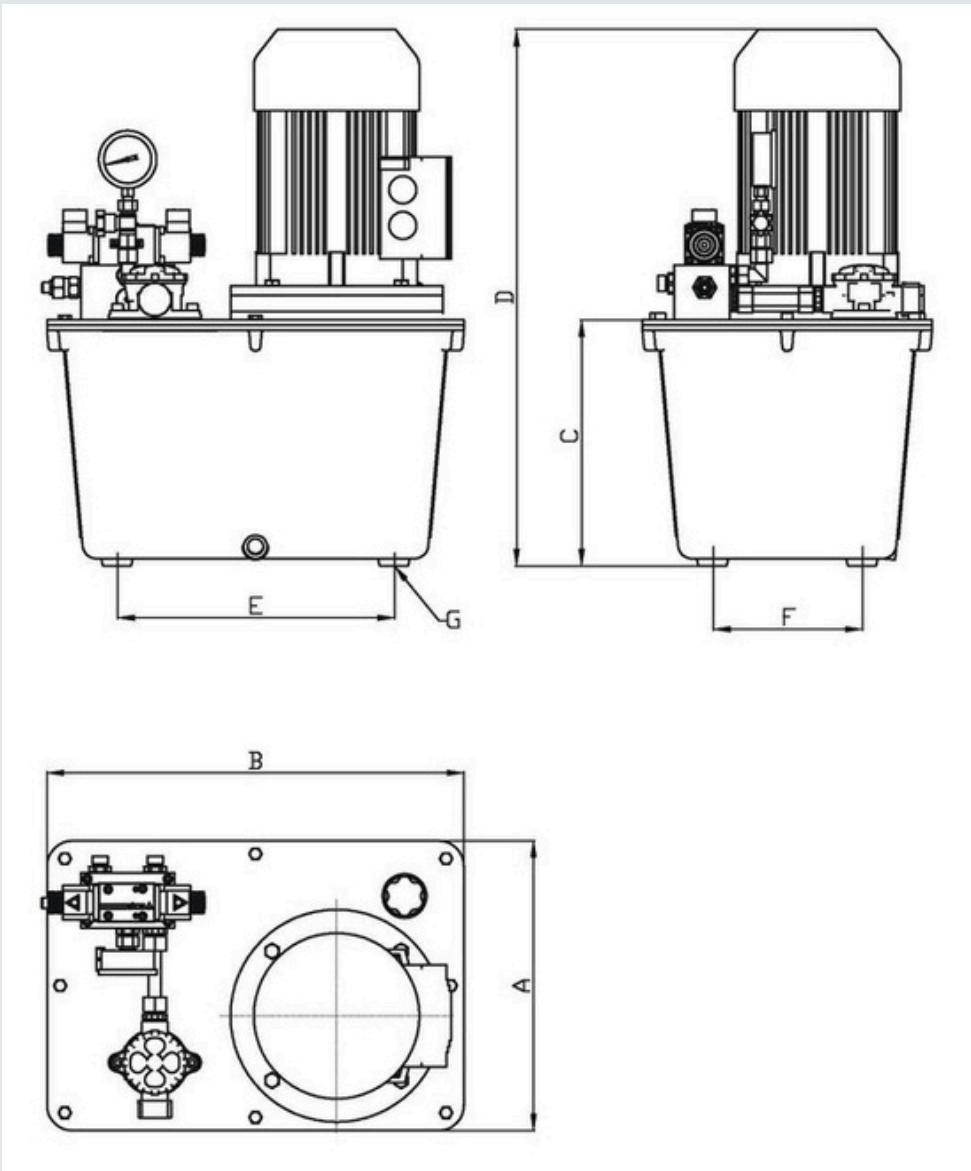


Type	Steel execution (Tab. 1.1)							
	Capacity [L]	A	B	C	Dmax	E	F	G
AH-20	20	310	400	334	C+Lmax (tab.3.)	355	220	11
AH-35	35	310	470	409		425	220	11
AH-50	50	400	500	430		455	310	11
AH-75	85	400	550	541		505	310	11
AH-100	109	400	700	542		655	310	11
AH-150	145	500	750	632		705	410	11

\* For other capacities, sizes and configurations, contact our Technical Department

Type AH - Dimensions and tank capacities - Aluminium execution

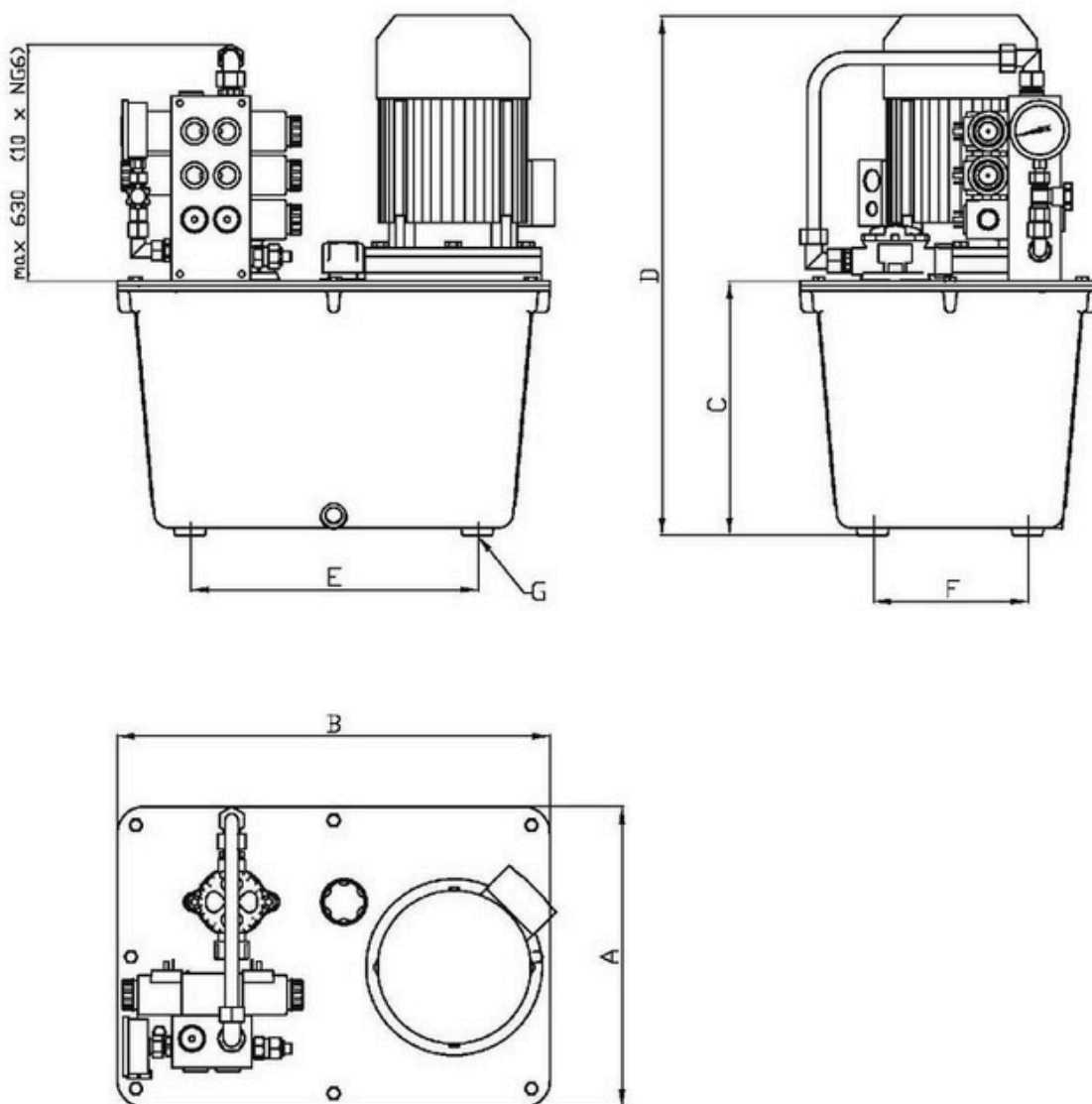
Basic version with one solenoid valve\*



Aluminium execution (Tab. 1.2)								
Type	Capacity [l]	A	B	C	D	E	F	G
AH-12A	11	240	310	215	C+Lmax (tab.3.)	225	155	M8
AH-20A	17	288	366	245		270	192	M8
AH-30A	26	341	491	285		326	176	M10
AH-44A	40	415	515	315		341	241	M10
AH-70A	63	465	605	365		422,5	282,5	M10

*Type AH - Dimensions and tank capacities - Aluminium execution*

*Version with two or more solenoid valves \**



Type	Aluminium execution (Tab. 1.2)							
	Capacity [l]	A	B	C	D	E	F	G
AH-12A	11	240	310	215	C+Lmax (tab.3.)	225	155	M8
AH-20A	17	288	366	245		270	192	M8
AH-30A	26	341	491	285		326	176	M10
AH-44A	40	415	515	315		341	241	M10
AH-70A	63	465	605	365		422,5	282,5	M10

\* For other capacities, sizes and configurations, contact our Technical Department





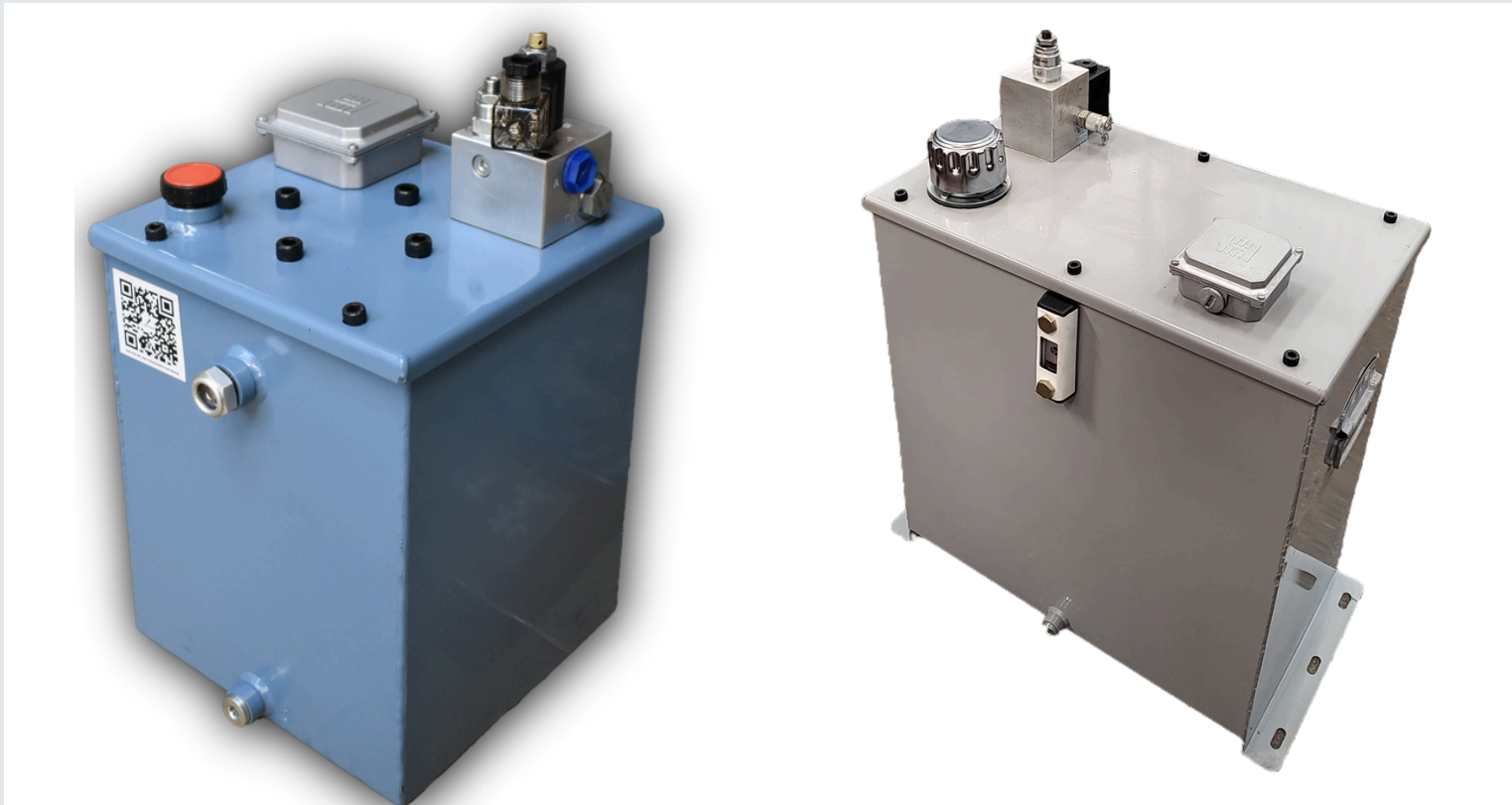
## 2. HYDRAULIC POWER PACKS - COMPACT

### *TYPE MH*

Main features:

- Nominal pressure to 21MPa
- Nominal flow rate at to 11,5 l/min
- Modular and compact design
- Multiple configurations available
- Motors for AC and DC voltages

# SUBMERSIBLE TANK TANK-25LTRS-V2-194W



1.

## *SUBMERSIBLE TANK TANK-25LTRS-V2-194W*

### **Main features:**

#### ◆ Key Features

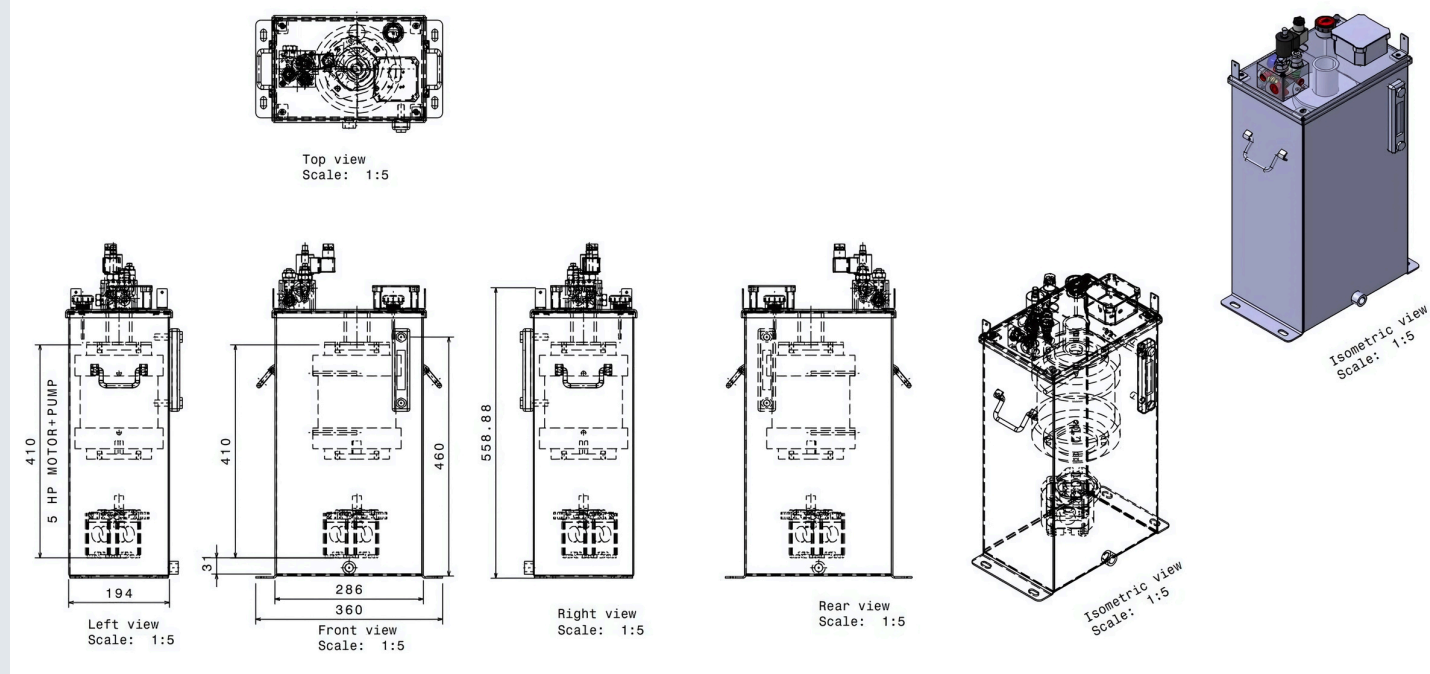
- Capacity Range: 25L, 40L, 60L, 80L, 100L, 120L
- Compact Design: Optimized footprint for easy integration in power units.
- High Durability: Fabricated with ISO 2768 mk tolerance standards.
- Pump & Motor Ready: Designed for smooth compatibility with HP motors and pumps.
- Leak-Proof Construction: Precision machining ensures rigid, accurate assembly.
- Corrosion Protection: High-quality surface coating for extended life.
- CE Certified: Meets stringent global safety and performance benchmarks.

#### ◆ Technical Highlights

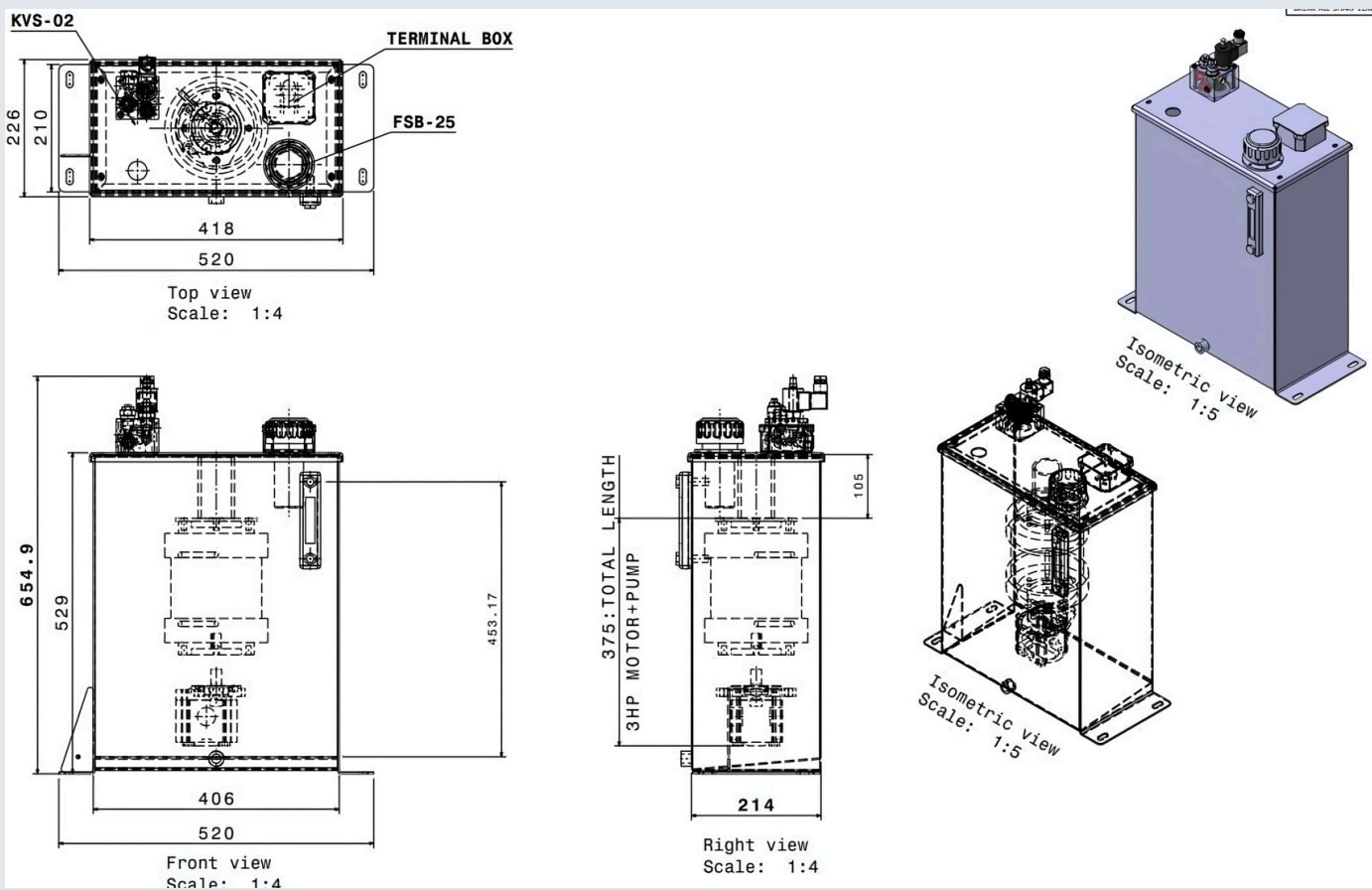
- Material: High-grade raw material for structural strength.
- Tolerances: General tolerances as per ISO 2768 mk standards.
- Machining: Precision-engineered with dowel-to-tapped and clearance-hole accuracy.
- Assembly: Includes top, bottom, side, and rear views for comprehensive fitting.

# SUBMERSIBLE TANK TANK-25LTRS-V2-194W

BREAK ALL SHARP EDGES

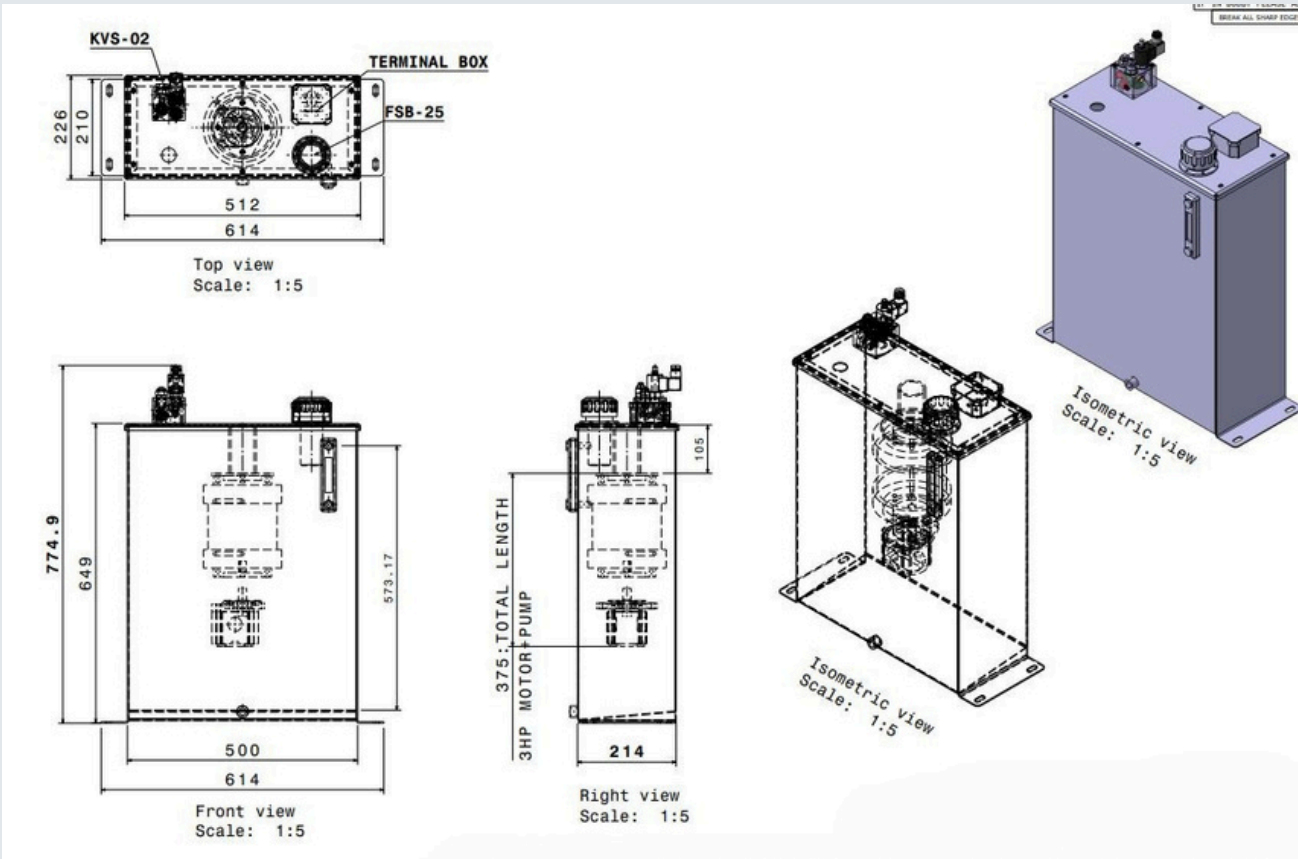


# SUBMERSIBLE TANK TANK-40LTRS-V2-214W

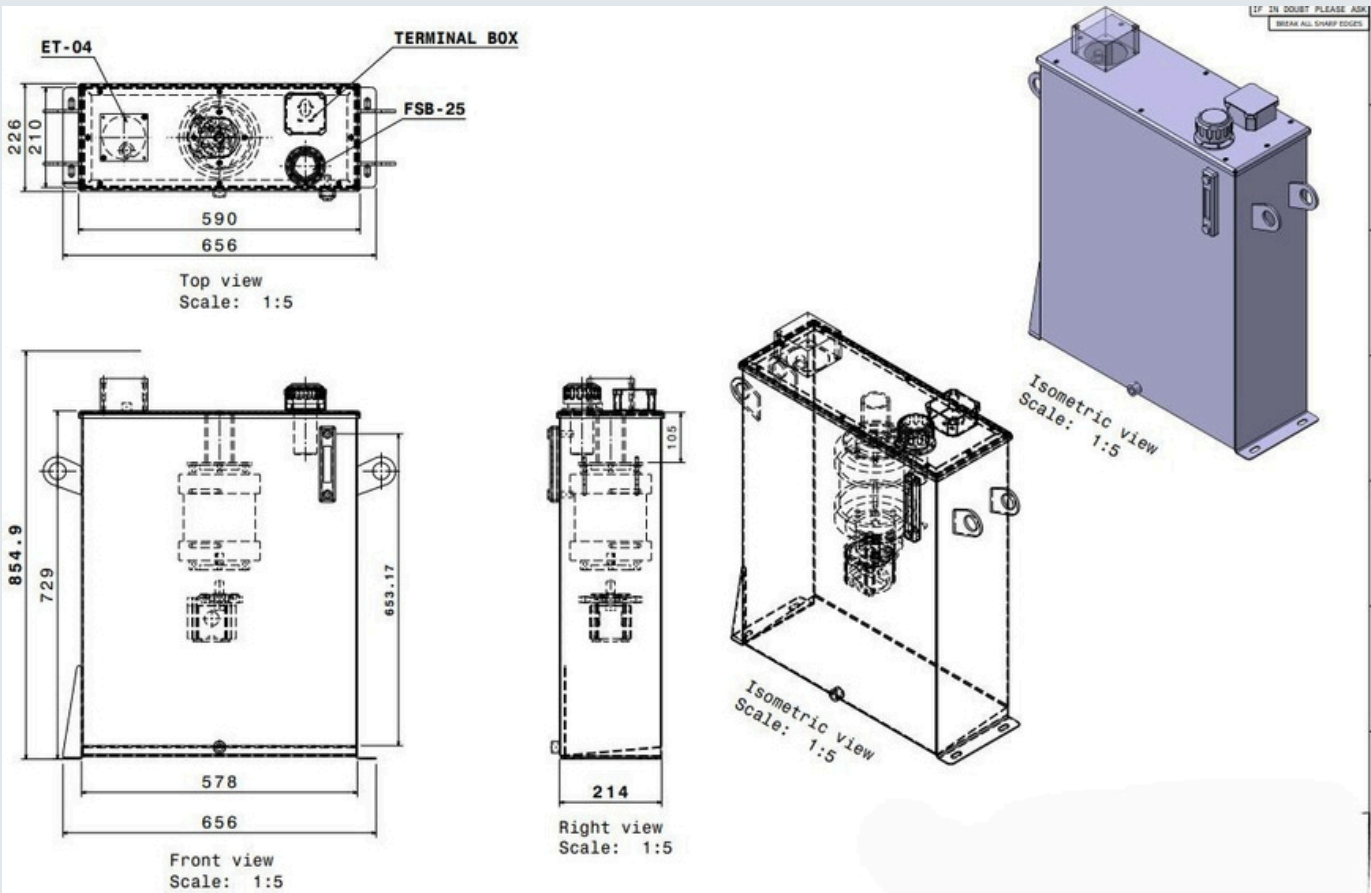




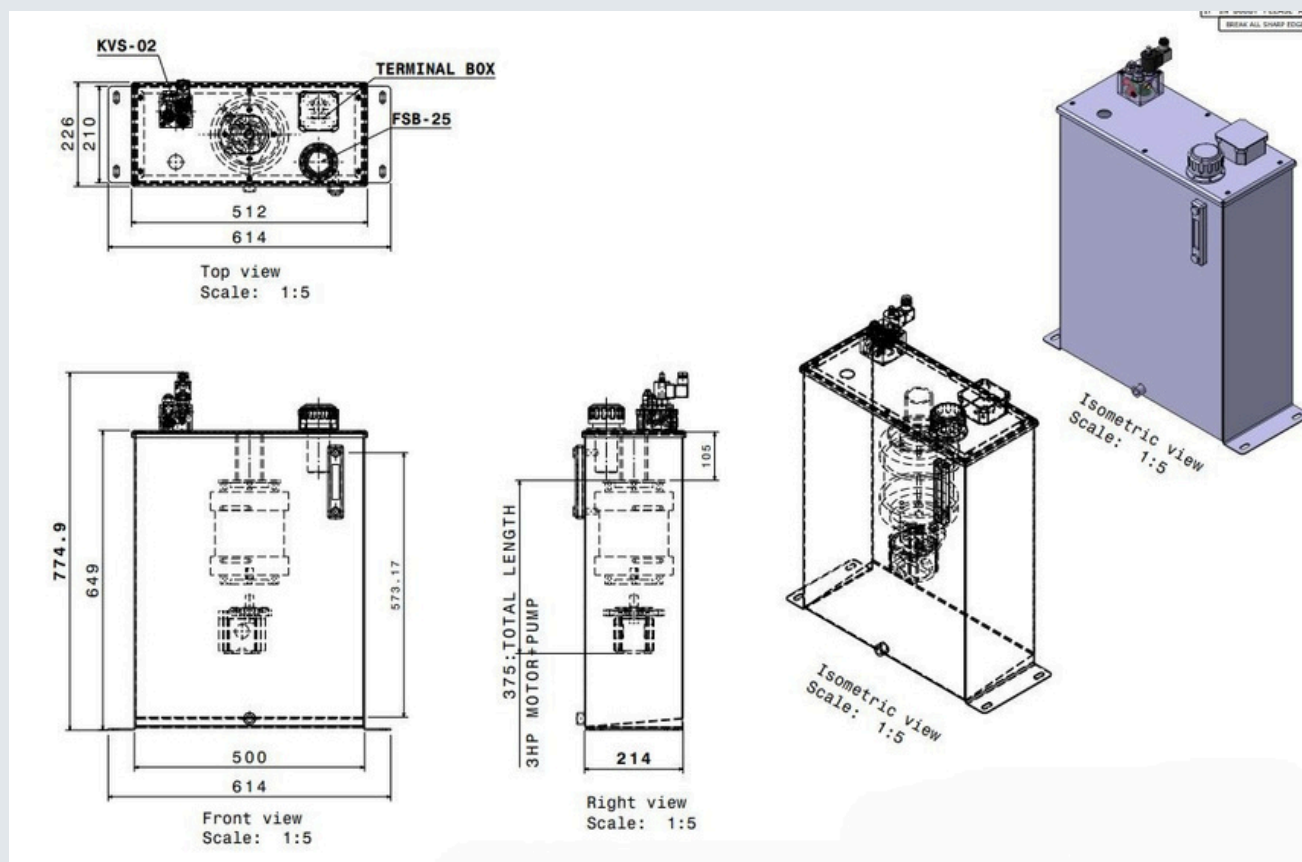
# SUBMERSIBLE TANK TANK-60LTRS-V2-214W



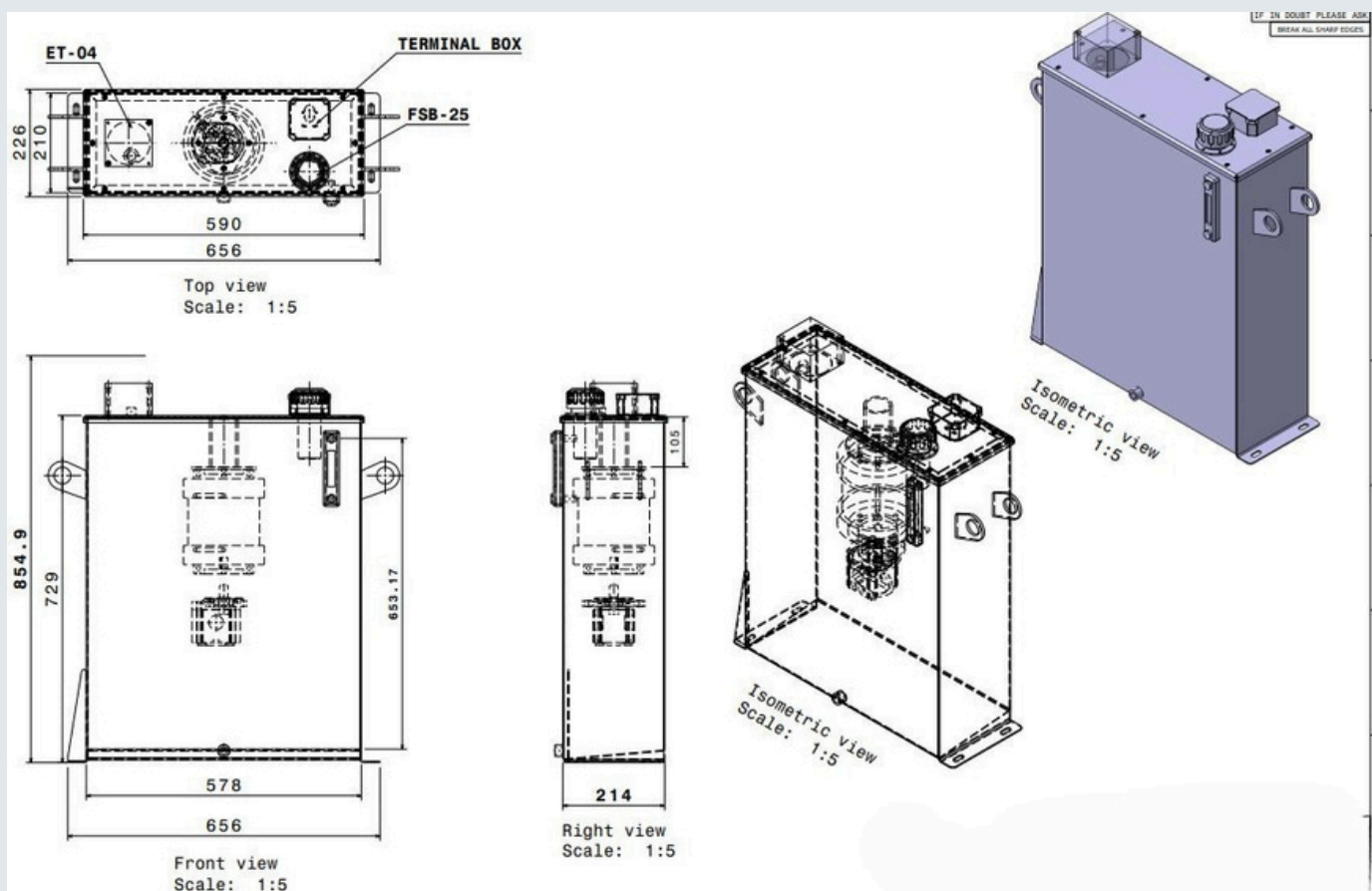
# SUBMERSIBLE TANK TANK-80LTRS-V2-214W



# SUBMERSIBLE TANK TANK-100LTRS-V2-214W



## SUBMERSIBLE TANK TANK-80LTRS-V2-214W



# TABLE TOP HYDRAULIC POWER PACK



Hydraulic Power Pack Units (25L / 40L / 80L / 100L / 120L)

## ◆ Product Overview

Fiable Hydraulics' Hydraulic Power Pack Units are engineered to deliver reliable, efficient, and compact performance across a wide range of industrial and mobile hydraulic applications. Designed with reservoir capacities from 25 litres to 120 litres, these units integrate the motor, pump, valves, and hydraulic accessories in a robust assembly, ensuring durability, ease of maintenance, and CE-certified safety standards.

## Key Features

Capacity Options: Available in 25L, 40L, 80L, 100L, and 120L configurations.  
Compact & Flexible Design: Optimized for easy system integration and table-top mounting.  
Motor & Pump Assembly: B5 flange-mounted motors with Dowty-type hydraulic pumps.  
Leak-Proof & Durable: Precision-machined tanks with ISO 2768 mk tolerances.  
CE Certified: Designed to meet international safety and performance standards.  
Easy Maintenance: Accessible layout for servicing filters, gauges, and valves.

## Technical Highlights

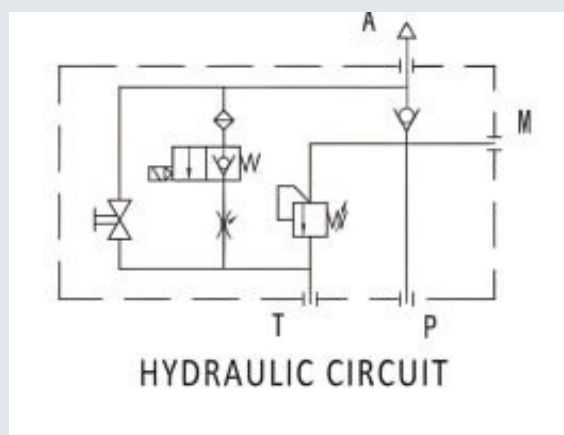
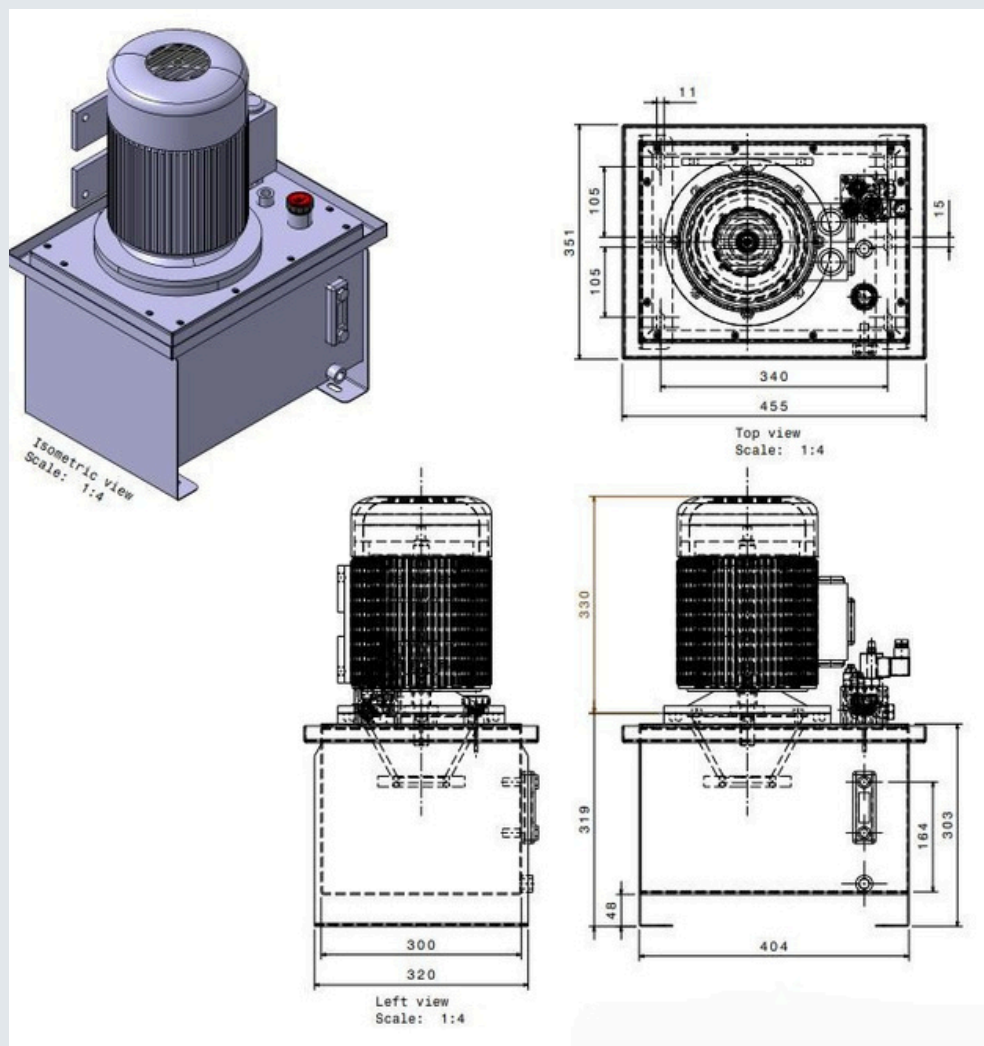
Motor Range: 2 HP / 3 HP / 5 HP (depending on tank size)  
Pump Flow Rate: 5 LPM – 20 LPM  
Operating Pressure: Up to 170 Bar (adjustable with relief valve)  
Reservoir Capacities:  
25 Litres  
40 Litres  
80 Litres  
100 Litres  
120 Litres

# TABLE TOP HYDRAULIC POWER PACK



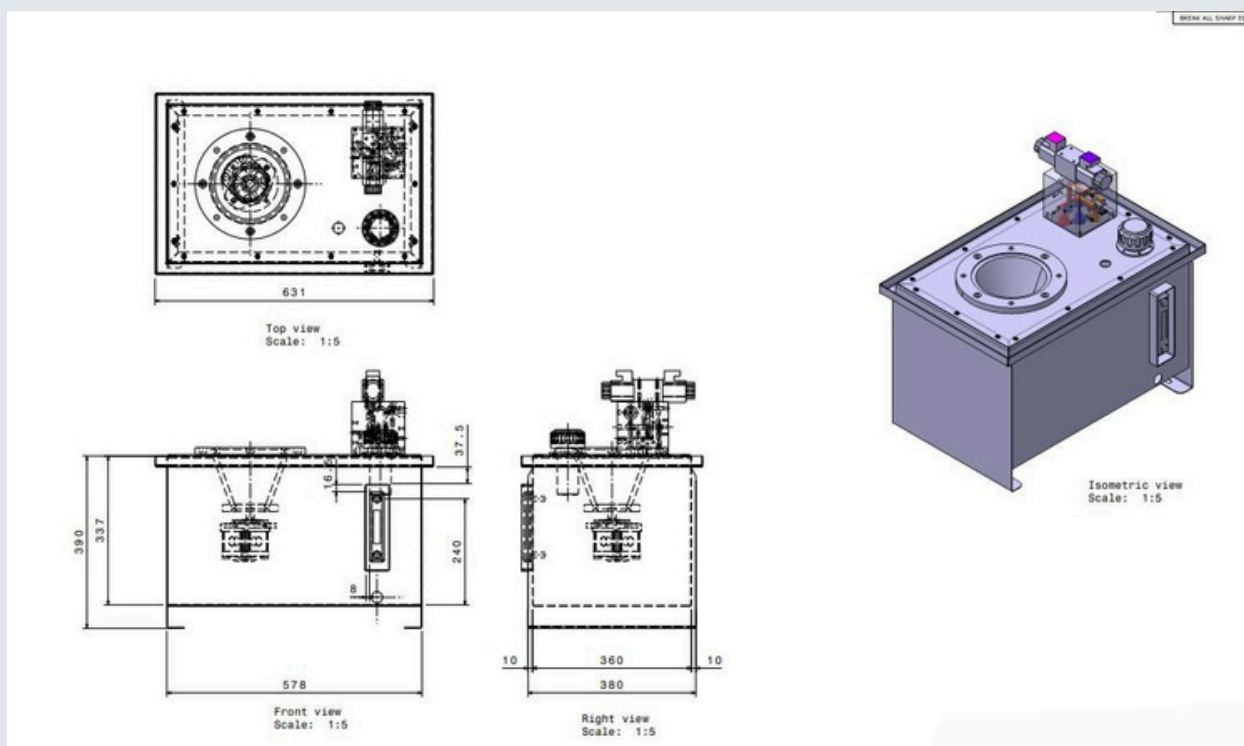


# TANK-25/30LTR - TABLE TOP

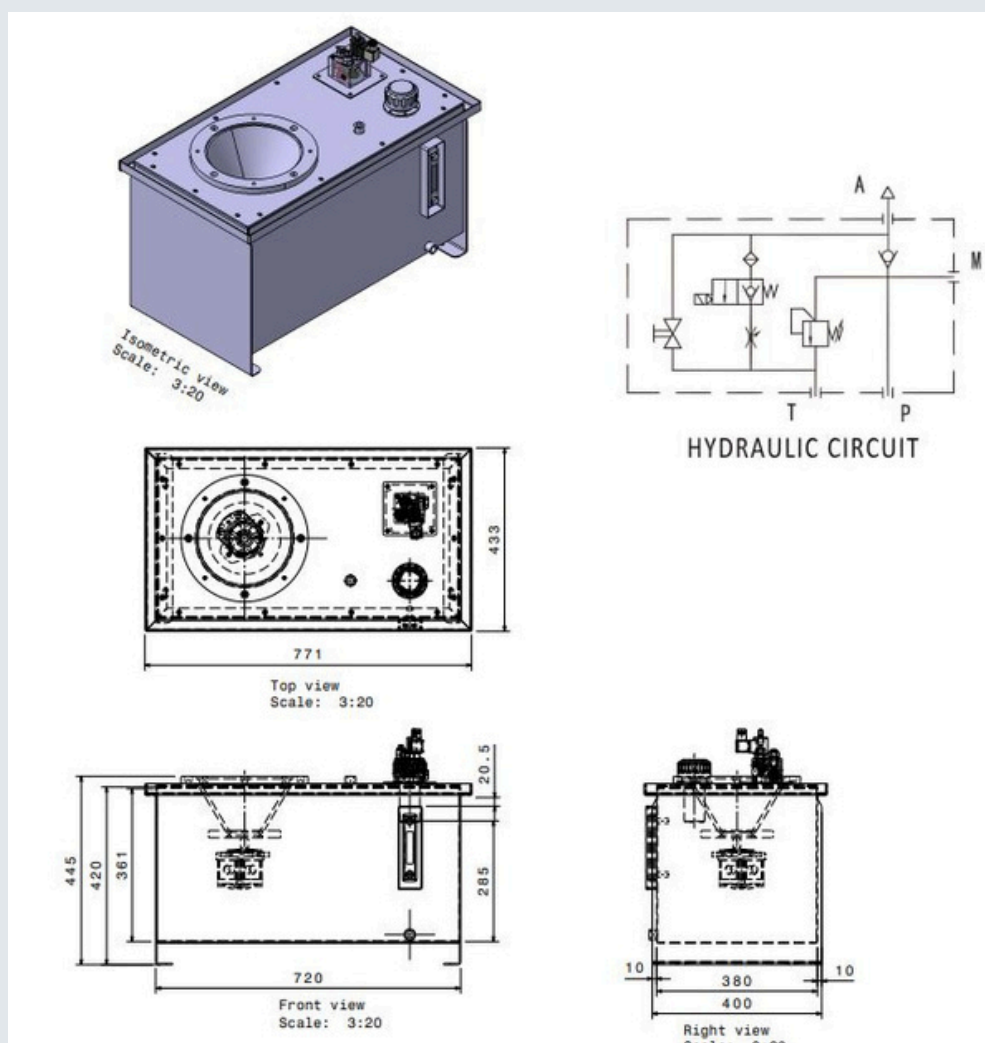




# TANK-40LTR - TABLE TOP



# TANK-80LTR - TABLE TOP



## Type MH - Introduction

### Application

Fiable Compact Hydraulic Power Pack (MH Series)

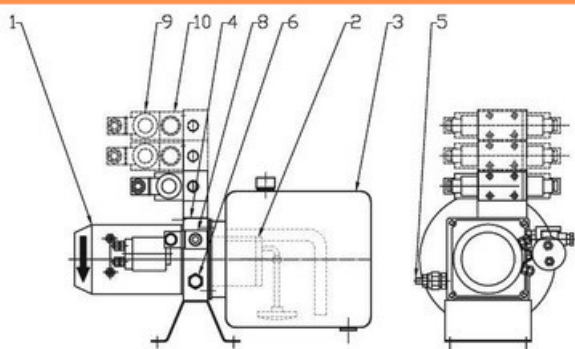
The MH Series Compact Hydraulic Power Packs by Fiable Hydraulics Pvt. Ltd. are engineered to efficiently drive and control hydraulic actuators across both industrial and mobile applications. These power packs are designed with versatility in mind, offering multiple assembly options for electric motors, pumps, and tanks. Their modular construction enables thousands of compact and space-saving configurations tailored to meet diverse application needs.

### Design Highlights

The standard Fiable MH Series Power Pack features an integrated system comprising a high-performance electric motor, hydraulic pump, oil reservoir, and a central manifold with built-in control valves. This base model can be further customized by incorporating modular valve assemblies, allowing for flexible hydraulic circuits and application-specific configurations.

Whether you're working in automation, material handling, construction equipment, or mobile systems, the Fiable MH Series ensures compact size, customizability, and reliable operation.

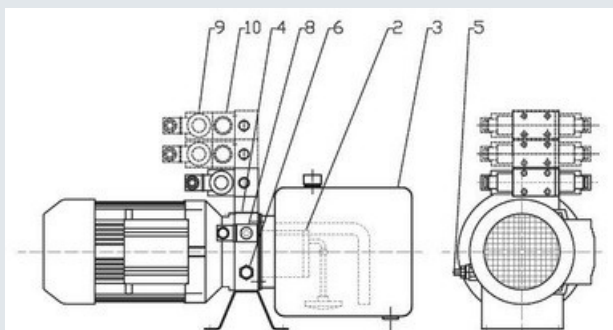
### Version with DC motor and steel tank



Basic version of MH type power pack is Composed of:

- 1 - AC or DC motor
- 2 - Hydraulic gear pump
- 3 - Oil tank
- 4 - Central manifold
- 5 - Pressure relief valve
- 6 - Check valve
- 7 - Manometer or pressure gauge

### Version with AC motor and steel tank



Additionally basic version may be extended by using:

- 8 - Solenoid operated on-off valve (NO or NC)
- 9 - Solenoid operated directional valves NG 6 for subplate mounting
- 10 - Modular NG6 pressure and flow control valves

## Type MH - Ordering code

**MH**

Power Pack type

**5S**

Tank type (Tab. 2)

**G1,6**

Pump displacement 3 (cm /rev.) (Tab.3)

**2,2**

Pump displacement 3 (cm /rev.) (Tab.3)

**24DC**

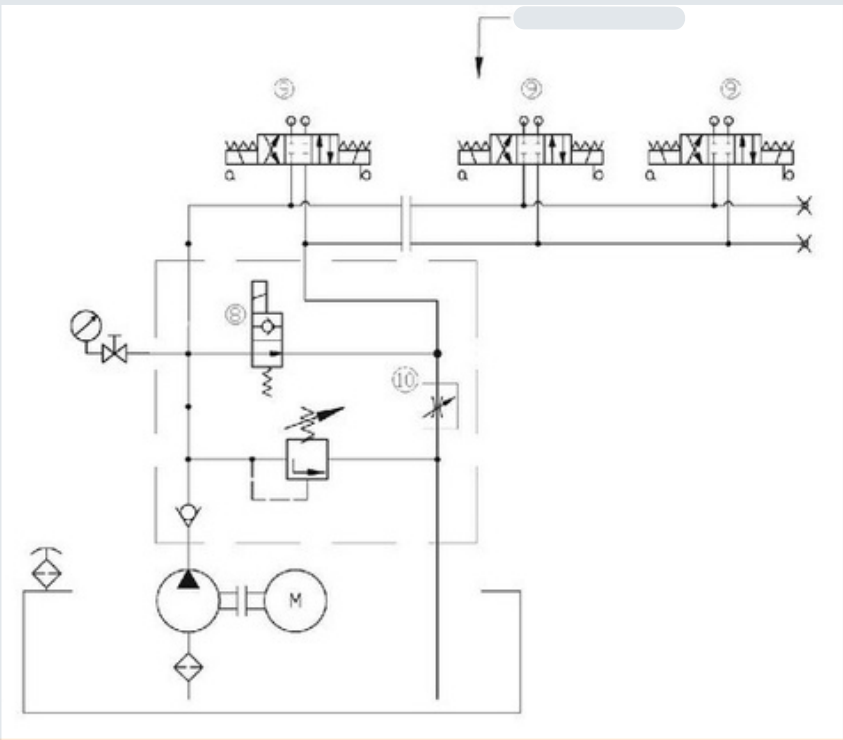
Nominal voltage

**xxxx\***

Design number

Type MH - Hydraulic scheme

Basic version



Note: Valves 8, 9, and 10 are optional. For custom configurations, please contact Fiable Hydraulics Technical Team.

Type MH - Basic hydraulic characteristics

Installation position	Horizontal or vertical
Ambient temperature	-20°C - +50°C
Recommended temperature	30°C - 50°C
Fluid temperature	-15°C - 70°C
Fluid	Mineral oil type HLP
Recommended viscosity	20 mm <sup>2</sup> /s – 100 mm <sup>2</sup> /s
Degree of fluid contamination	Class 21/18/15 according to ISO 4406
Nominal voltage	For AC: 230/400V 50Hz For DC 12 or 24V
Pump type	Gear pump (Tab.3)
Tank capacity	Depended on flow rate and duty cycle (Tab.2)

*Type MH - Tank types and capacities - Tab.2*

Material		Steel						Plastic			
Type		2,5 S	5 S	10 S	12 S	20 S	30 S	1,5 P	3 P	6 P	8 P
Capacity		2,5 dm <sup>3</sup>	5 dm <sup>3</sup>	10 dm <sup>3</sup>	12 dm <sup>3</sup>	20 dm <sup>3</sup>	30 dm <sup>3</sup>	1,5 dm <sup>3</sup>	3 dm <sup>3</sup>	6 dm <sup>3</sup>	8 dm <sup>3</sup>
Dimensions	L	235	300	262	380	293	423	135	250	350	375
	D	130	180	220	220	-	-	-	-	-	-
	A x B	-	-	-	-	350 x280		170x140		170x140	

\* Other tanks are available on request

*Type MH - Pump types and displacements - Tab.3*

Pump types	G0,8	G1,1	G1,6	G2,1	G2,6	G3,2	G3,7	G4,2	G4,9	G6,0	G7,9
q[cm <sup>3</sup> /rev]	0,85	1,1	1,6	2,1	2,6	3,2	3,7	4,2	4,9	6	7,9
p [bar]	210	210	210	210	210	190	190	190	170	170	160

\* Optionally 0,2- 0,6 cm /rev and 9,8 cm /rev and high pressure pumps are available.

*Type MH - Standard three-phase motors - Tab.4*

Power	0,25 kW	0,37 kW	0,55 kW	0,55 kW	1,1 kW	1,5 kW		2,2 kW	3 kW
Nominal voltage	230/400V 50Hz								
Motor size	71		80		90		100		
Rated speed [rev/min]	1350	1370	1395	1395	1415	1420	1420	1420	
Length A**	210+20	210+20	233,5+22	233,5+22	281+32	281+32	372+58	372+58	
Diameter AC	145	145	163	163	180	180	203	203	

\* For other voltages contact our Technical Department

\*\* Length A consists of motor and flange lengths

**Type MH - Hydraulic characteristics for three-phase AC motors**

Pump type Pump type	Rated flow at 1450rev/min	Maximum pressure [MPa] with motor power of:							
		0,25 kW	0,37 kW	0,55 kW	0,75 kW	1,1 kW	1,5 kW	2,2 kW	3 kW
G 0,8	1,16	11	16						
G 1,1	1,6	8	12	17					
G 1,6	2,32	5	8	12	16				
G 2,1	3,05		6	9	12	18			
G 2,6	3,77		5	7	10	15	20		
G 3,2	4,64			6	8	12	16		
G 3,7	5,37				7	10	14	21	
G 4,2	6,09					9	12	18	
G 4,9	7,11					8	11	15	21
G 6,0	8,7						9	13	17
G 7,9	11,46						7	10	13

\* Calculation made for three-phase motors

\*\* For single-phase motors parameters should be 10 - 15% lower (consult with our Technical Department)

\*\*\* For other pumps contact our Technical Department

**Type MH - Standard DC motors - Tab.5**

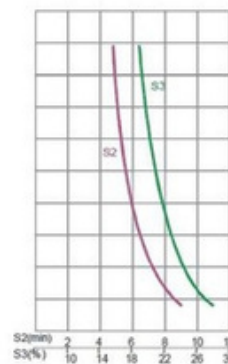
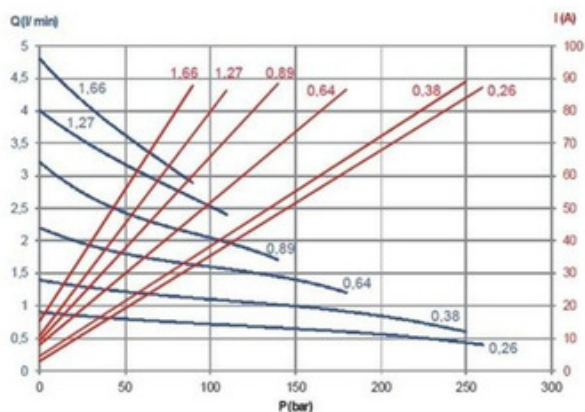
Power *	0,5 kW	0,8 kW	1,6 kW	2,1 kW	0,8 kW	2,2 kW	3 kW
Nominal voltage	12V	12V	12V	12V	24V	24V	24V
Current [A]	90	150	210	300	75	130	100
Nominal duty cycle	S2:5min S3:17%ED	S2:4min S3:10%ED	S2:5min S3:10%ED	S2:4min S3:12%ED	S2:4min S3:10%ED	S2:2,5min S3:10%ED	S2:4min S3:7,5%ED
Rated speed [rev/min]	1700	2100	2800	2400	2400	2400	3500
Length A	139	139	162	162	139	162	237
Diameter AC	80	80	114	114	80	114	125

\* For motors with other power (up to 4 kW) contact our Technical Department

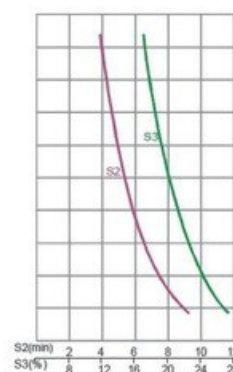
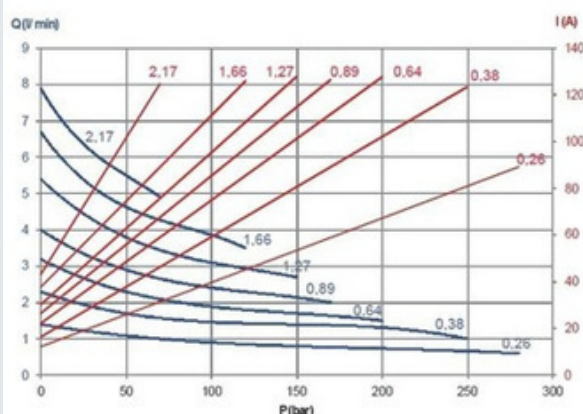


## Type MH - Hydraulic characteristics for DC motors

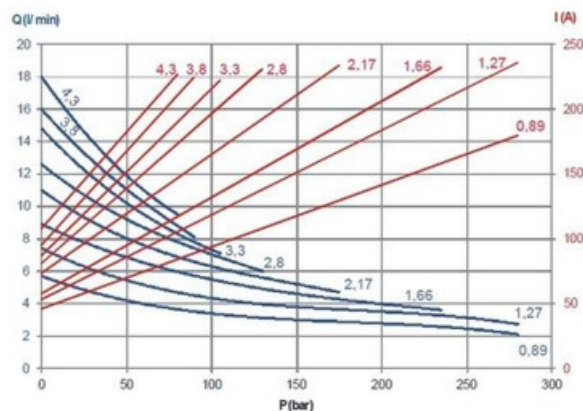
### 500W 12VDC M46C1ST05



### 800W 12VDC M46C1ST08

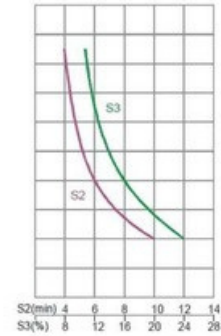
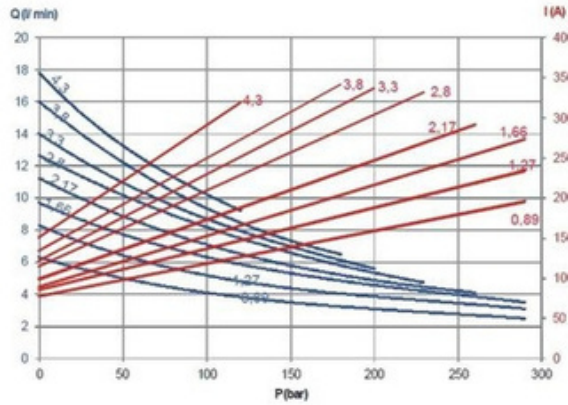


### 1600W 12VDC M46C1ST16

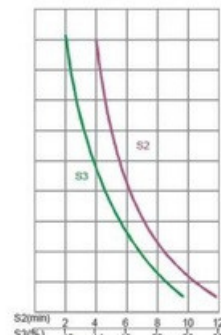
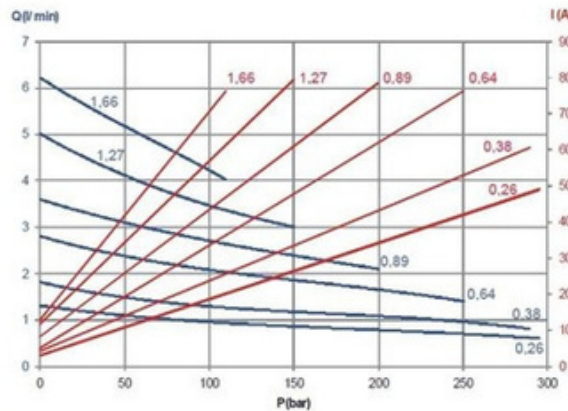


Type MH - Hydraulic characteristics for DC motors

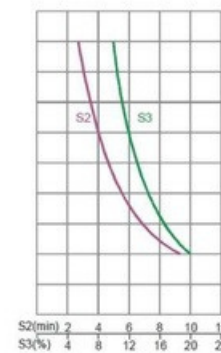
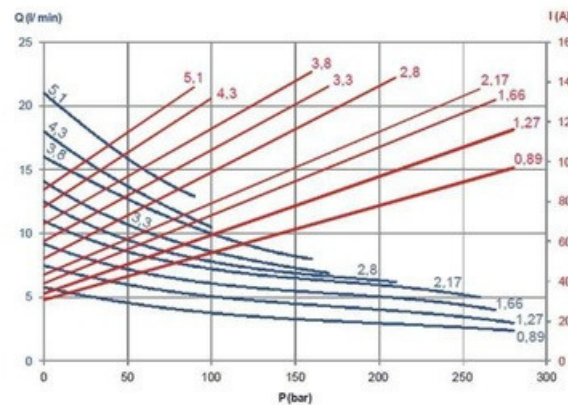
## 2100W 12VDC M46C1ST21



## 800W 24VDC M46C2ST08



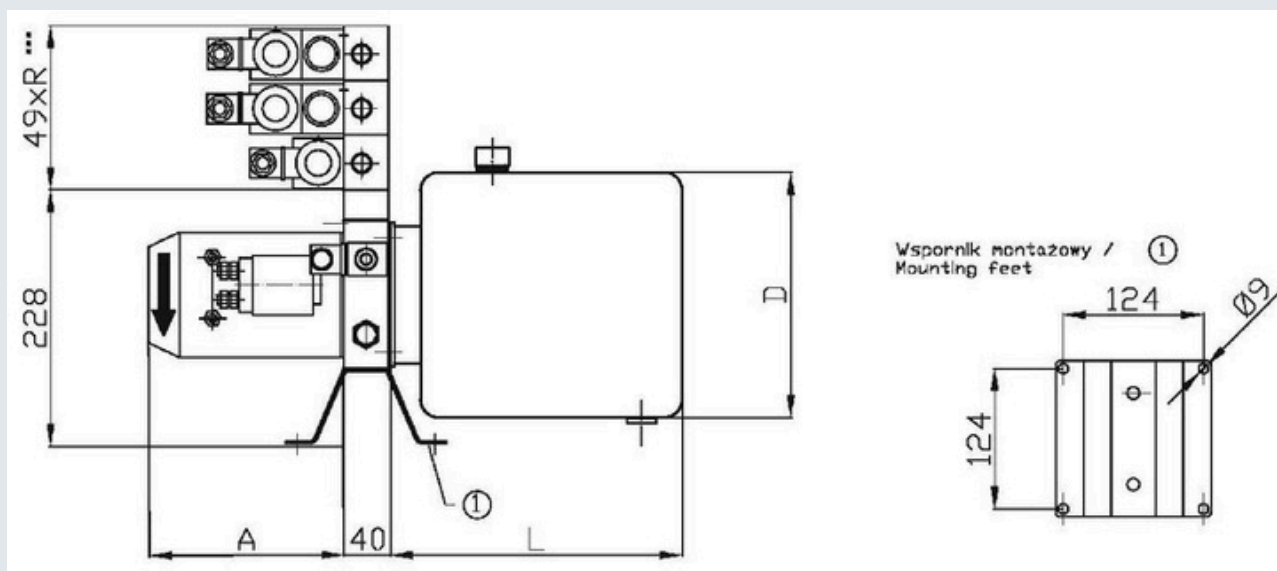
## 2200W 24VDC M46C2ST22



\* For specific parameters and duty cycles contact our Technical Department

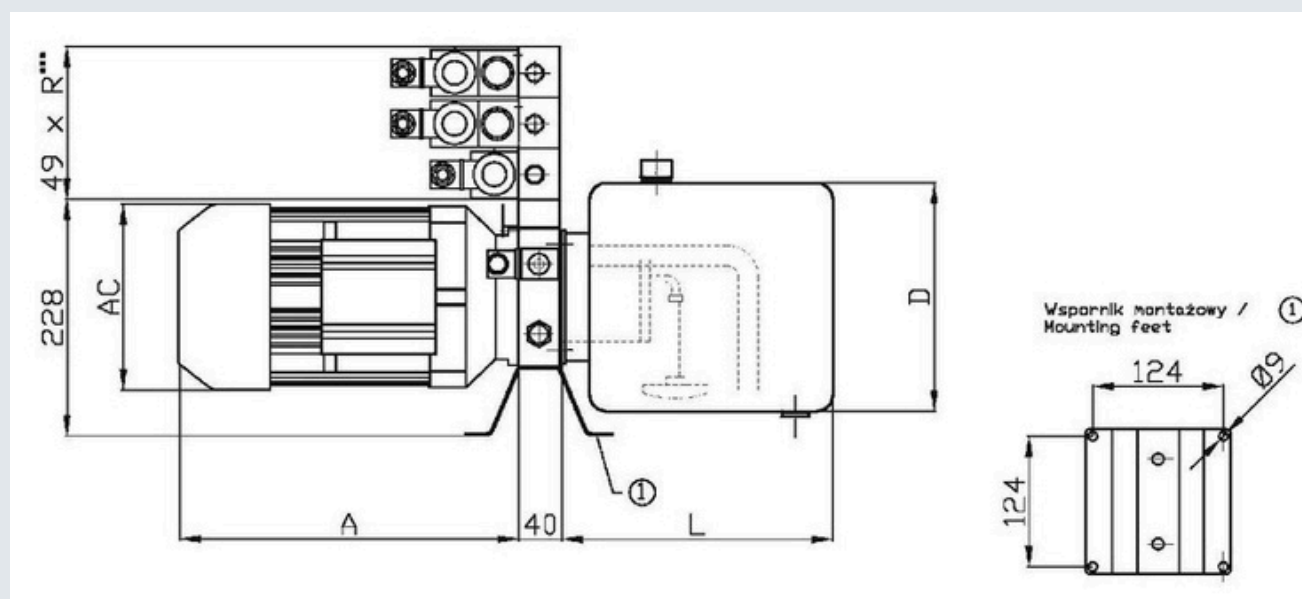
## Type MH - Hydraulic characteristics for DC motors

### Version with: 2,5S, 5S, 10S, 12S tanks\*



## Type MH - Three-phase AC motor version - Dimensions

### Version with: 2,5S, 5S, 10S, 12S tanks\*



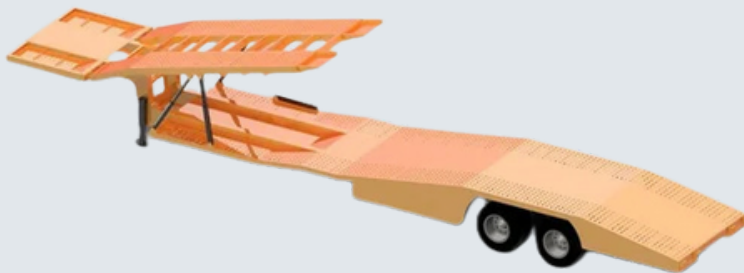
\* For tanks: 1,5P, 3P, 6P, 8P and 20S and 30S – contact our Technical Department

\*\* Dimensions A and AC- see Tab.4

\*\*\* "R" means quantity of NG6 stations

# HYDRAULIC POWER UNIT

---





## ✓ CE Certified Quality Assurance

Fiable Hydraulics Pvt. Ltd. is proud to be CE Certified under the Pressure Equipment Directive 2014/68/EU, ensuring our products meet the highest international standards of safety, reliability, and performance.

Certification Details:

Certificate Number: CE-1225

Issued By: UK Certification and Assessment Ltd. (UKAS)

Validity: 31st July 2025 – 30th July 2028

Scope: Design and Manufacturing of Hydraulic Cylinders, Hydraulic Power Units, and Hydraulic Components.

This certification confirms that our design, manufacturing, and inspection processes undergo continuous surveillance and meet stringent European quality and safety benchmarks.

With the CE mark, Fiable Hydraulics products are trusted globally for their compliance, durability, and reliability across diverse applications.

### CERTIFICATE OF COMPLIANCE



UK CERTIFICATION AND ASSESSMENT LTD.



We hereby declare that the technical file of product complied with the requirement of Council Directive on Pressure Equipment Directive 2014/68/EU.

**Manufacturer**  
Name : FIALE HYDRAULICS PRIVATE LIMITED  
Address : PLOT NO. PAP-V-75, MIDC PHASE II ROAD KHED WASULI CHAKAN PUNE MAHARASHTRA 410501.  
Products : DESIGN AND MANUFACTURING OF HYDRAULIC CYLINDERS, POWER-UNITS AND HYDRAULIC COMPONENTS.

The Certification body has performed an audit of the above product quality system covering the design, manufacture and final inspection of the certified product. The quality system has been assessed, approved and is subject to continuous surveillance according to Council Directive on Pressure Equipment Directive 2014/68/EU.

**This certificate is issued under the following conditions:**

1. It applies only to the quality system maintained in the manufacture of above referenced models and it does not substitute the design or type examination procedures, if requested.
2. The certificate remains valid until the manufacturing conditions or the quality systems are changed.
3. The certificate validity is conditioned by positive results or surveillance audits.
4. After fulfilling the relevant Standard testing performance, the manufacturer shall affix to each device, of the referenced models.

The CE mark as shown above can be used, under the responsibility of the manufacturer, after completion of an EC Declaration of conformity and compliance with all relevant EC Directives. The statement is based on a single evaluation of one sample of above mentioned product. It does not imply an assessment of the whole production.

**Validity of this certificate can be verified at <https://www.ukascert.co.uk/verify.aspx>**

<b>Certificate Number:</b>	CE-1225
<b>Issue Date:</b>	31 <sup>st</sup> July 2025
<b>Valid Until:</b>	30 <sup>th</sup> July 2028
<b>1<sup>st</sup> Surveillance on or before:</b>	30 <sup>th</sup> July 2026
<b>2<sup>nd</sup> Surveillance on or before:</b>	30 <sup>th</sup> July 2027

**UK CERTIFICATION AND ASSESSMENT LTD.**



**Auth. Signatory**



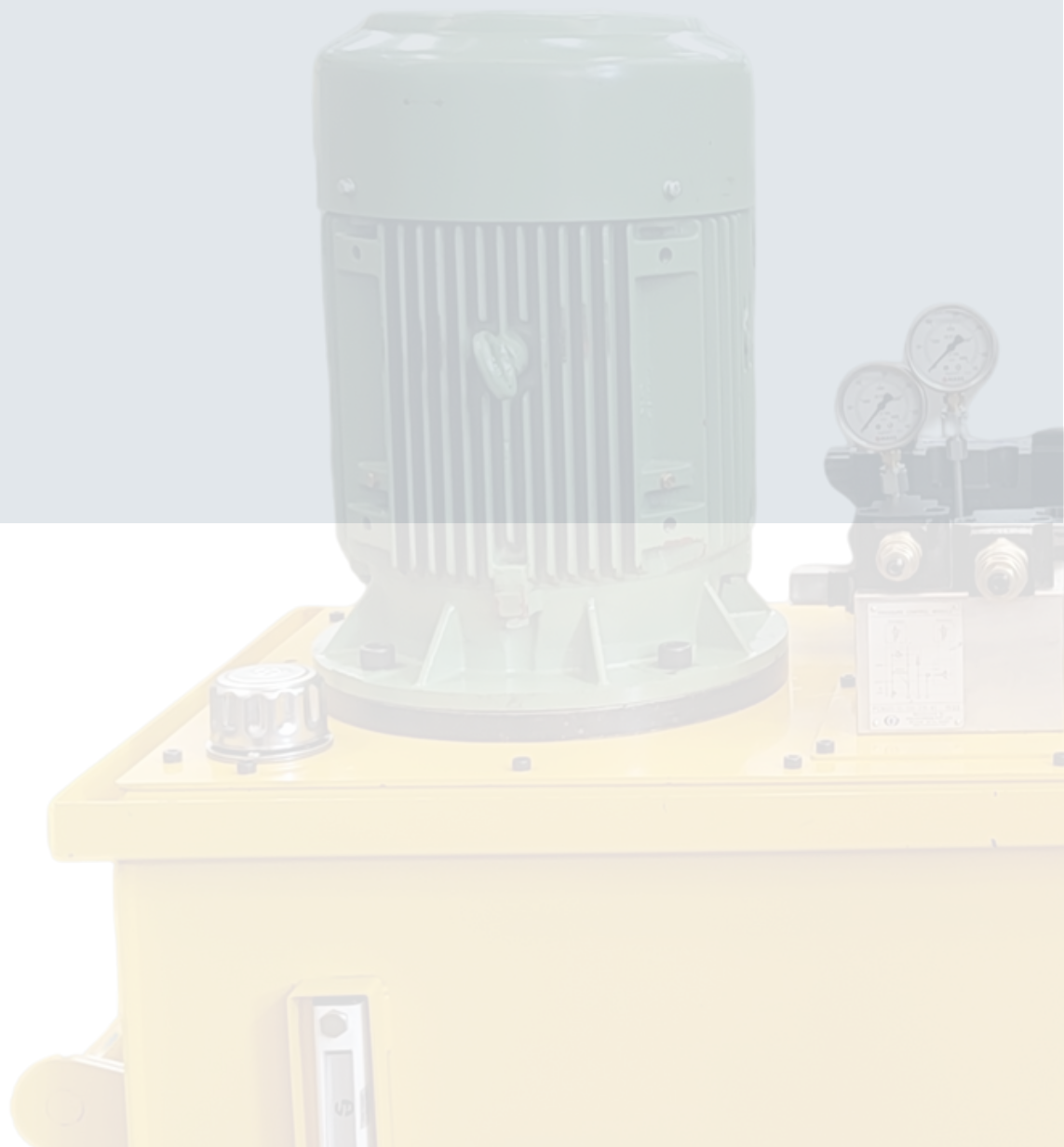
UK Certification and Assessment Ltd  
Regd. Off: 71-75 Shelton Street London Greater London WC2H 9JQ UNITED KINGDOM  
Website: [www.ukascert.co.uk](http://www.ukascert.co.uk), Mail: [info@ukascert.co.uk](mailto:info@ukascert.co.uk) Company No. 12660984  
(In case of surveillance audit is not allowed to be conducted: this certificate shall be suspended/withdrawn).  
This certificate is the property of UK Certification and Assessment Ltd and shall be returned immediately on request.

UKASCERT UKASCERT UKASCERT UKASCERT UKASCERT





Fiable Hydraulics



Fiable Hydraulics

## Fiable Hydraulics Pvt Ltd

Address: Plot No. PAP-V-75, MIDC Phase-II Road,  
Khed, Wasuli, Chakan, Pune, Maharashtra – 410501

Phone: +91 8806552786 / +91 9545952786

Email: [fiablehydraulics@gmail.com](mailto:fiablehydraulics@gmail.com)

Website: [www.fiablehydraulics.in](http://www.fiablehydraulics.in)



ISO 9001:2015 Certified Company