

# Fiable Hydraulics Pvt Ltd.

## Hydraulic Professionals

### HYDRAULIC POWER PACKS AND CYLINDER MANUFACTURER

## PRODUCT OVERVIEW



INDUSTRIAL AREA, PHASE -II, Chakan, Wasuli, Maharashtra 410501

[www.fiablehydraulics.in](http://www.fiablehydraulics.in)

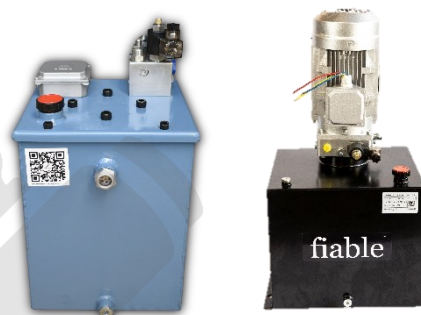


## AC POWER UNITS



- **Power Rating:** 1HP to 100 HP
- **Voltage Rating:** 230V / 380V / 415V
- **Pump Option :** Up to 1000 LPM
- **Manifold Option:** As per customer requirements
- **Tank Option :** Up to 400 Litres.

## AC COMPACT POWER UNITS



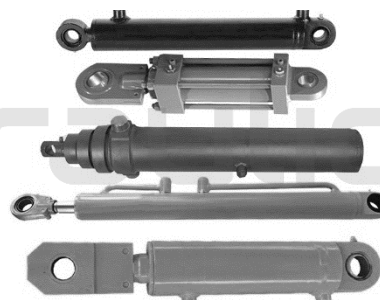
- **Power Rating:** 1HP / 2HP / 3HP / 5HP
- **Voltage Rating:** 230V / 380V
- **Pump Option :** 1.00 / 2.00 / 3.3 / 4.2 / 5.8 / 7.00 / 9.00 cc / rev
- **Manifold Option:** Single Acting
- **Tank Option :** 6L, 8L, 10L, 12L, 15L, 25L, 35L, 50L & Customised

## DC COMPACT POWER UNITS



- **Voltage Rating:** 12V, 24V, 48V
- **Power Rating:** 0.8 / 1.6 / 2.2 / 3 / 4.5 KW
- **Pump Option :** 1.00 to 9.00 cc / rev
- **Manifold Option:** Single Acting
- **Tank Option :** 6L, 8L, 10L, 12L, 15L, 25L, 35L, 50L & Customised

## HYDRAULIC CYLINDERS



- **Bore:** 40 – 400 mm
- **Stroke:** Up to 6000 mm
- **Working Pressure:** 350 Bar
- Standard Mountings as per ISO 6020
- Special Purpose Custom made Cylinders





## FIABLE PRODUCTS

### ACCUMULATORS



- Accumulators are used for Damping of Vibration, Pulsations & Shocks
- **Volume:** 0.63 L to 200 Liters
- **Pressure:** 315 bar
- **Types:** Bladder, Diaphragm & Piston

### POWER UNIT SPARES



- **Relief Valves.**
- **Flow Control Valves.**
- **Solenoid Valve and Coil.**
- **Relay :** 12V, 24V, 48V

### AIR COOLERS



- Used as cooling device for Hydraulic oil in construction or industrial system
- **Flow Capacity:** 50 to 300 Lpm
- **Heat Dissipation:** Max 46000 Kcal/hr
- **Fans:** Flameproof, Single, Three Phase, D12, D24

### CUSTOM MANIFOLD BLOCK



- The combination of extensive application experience, innovative design and flexible manufacturing allow us to offer custom hydraulic manifold systems that meet our customer's demands
- **Flow:** 500 Lpm
- **Max Pressure:** 700 bar
- Protective Coatings



## HYDRAULIC MOTORS

### ORBITAL MOTORS



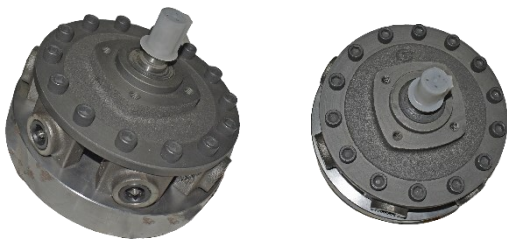
- **Displacement:** 8 to 750 cc /rev Compact and High Volumetric Efficiencies.
  - **Torque:** 800 NM Max.
  - **Type:** OMP, OMR.
- 

### PISTON MOTORS



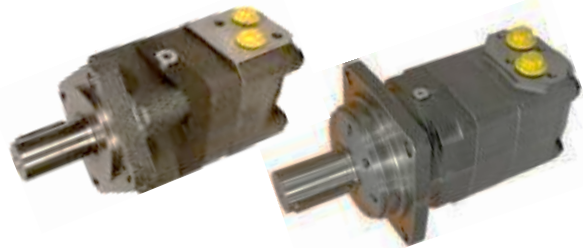
- **Variable & Fixed Piston Motor**
  - **Displacement:** 10 to 355 cc /rev
  - **Torque:** 400 Bar Max.
  - **Type:** A2FM.
- 

### RADIAL PISTON MOTORS



- **Displacement:** 63 to 16000 cc / rev Low Speed and High Torque Piston Motors.
  - **Torque:** 14000 NM Max.
  - **Type:**..
- 

### ORBITAL MOTORS



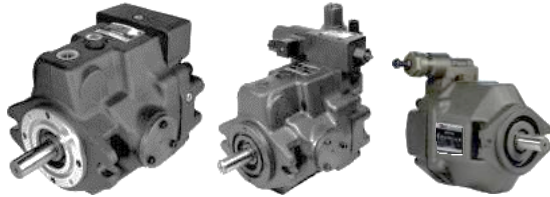
- **Displacement:** 80 to 985 cc<sup>3</sup> / rev
  - Compact and High Volumetric Efficiencies.
  - **Torque:** 2400 NM Max.
  - Disc Valve Motors.
  - **Type:** OMS, OMT.
- 





## HYDRAULIC PISTON PUMPS

### AR SERIES



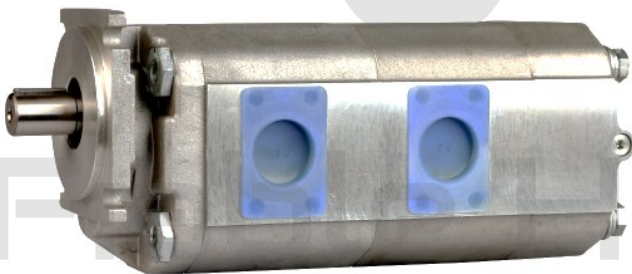
- **Variable Displacement Piston pumps** used for **Mobile, Press, Machine Tool, Injection Machine**
- **Displacement:** 16 / 22 / 37 / 45 / 56 / 70 / 90 / 100 / 145 cc / rev
- **Controller:** Pressure Compensator.
- **Max Pressure:** 280 bar.

### HYDRAULIC MOTORS



- **Displacement:** 50 to 985 cc / rev
- **Types:** Brake Control, Wheel Mounting, W/o Bearing Special Functions available.
- **Torque:** 2400 NM Max.
- **Type:** Wheel, Brake, Short Motors Available.

### CBKP GEAR PUMP



- **Aluminum Body Multistage Gear Pumps with Heavy Bearing for Rugged Applications**
- **Size:** 32, 40, 63, 80, 100 Cc/rev
- **Pressure:** 250 bar.

### CBK GEAR PUMPS



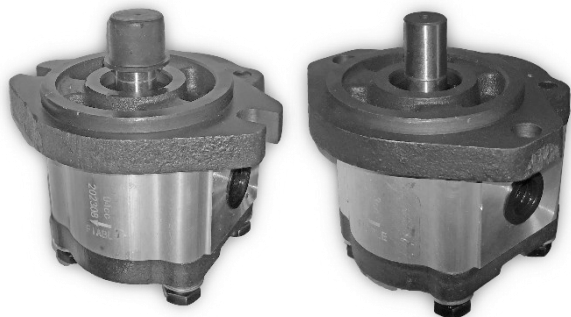
- **Compact Gear Pumps.**
- **Displacement :** 0.16 – 9 cc / rev.
- **Pressure :** 250 Bar Max.





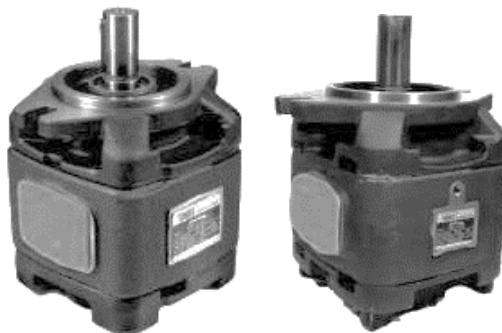
## HYDRAULIC PUMPS

### EXTERNAL GEAR PUMPS



- **Aluminum body gear pumps with high efficiency and long life**
- **Displacement:** 1 – 170 cc /rev
- **Series:** 0P, 1P, 2P, 3P.
- **Max Pressure:** 250 bar.
- Shaft and Mounting options available

### INTERNAL GEAR PUMPS



- **Low noise and pulsation pumps for mobile Press and Injection Machinery**
- **Displacement:** 8 – 160 cc /rev
- **Series:** Single, Double and Triple.
- Shaft and Mounting options available

### A2F SERIES



- **Bent Axis Pumps with high pressure and performance**
- **Displacement:** 12 – 355 cc /rev
- **Type:** Open / Closed Loop.
- **Max Pressure:** 350 bar

### A10 VSO / A10 VO SERIES



- **Variable Displacement Piston pumps used for Mobile, Press, Machine Tool, SPM Machine.**
- **Displacement:** 18 / 28 / 45 / 71 / 100 / 140 cc /rev
- **Controller:** DR, DFR, DRG, DFLR, Proportional.
- **Max Pressure:** 280 bar.





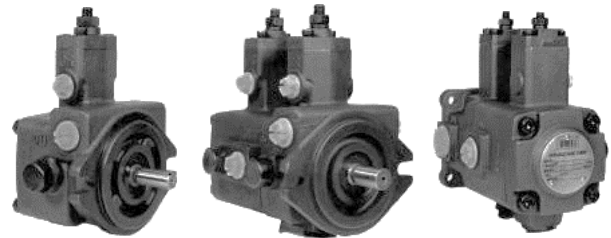
## HYDRAULIC PUMPS

### PV2R-SINGLE



- **Fixed Displacement Low Noise & High Pressure Vane Pumps for diversified application**
- **Displacement:** 4 - 224 cc /rev
- **Type:** PV2R1, PV2R2, PV2R3.
- **Max Pressure:** 210 bar

### VP SERIES



- **High Efficiency and Low Noise Variable Vane Pumps**
- **Displacement:** 8 - 40 cc /rev
- **Type:** Single / Double.
- **Max Pressure:** 70 bar





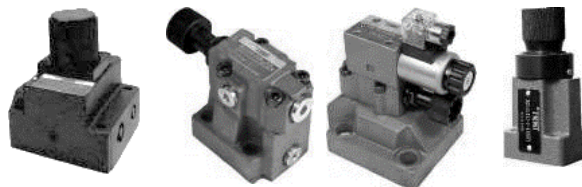
## HYDRAULIC VALVES

### DIRECTIONAL CONTROL VALVES



- **Direct and Pilot Operated Valves** used for Movement of hydraulic actuators.
- **Max Flow:** 1100 LPM
- **Max Pressure:** 320 bar.
- **Type:** 4WE 6, 10, 16, 22, 30

### PRESSURE & FLOW CONTROL VALVES



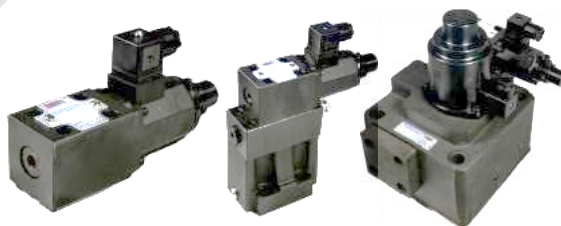
- **Direct and Pilot Operated Relief Valves & Compensated Flow Control Valve**
- **Max Flow:** 650 LPM
- **Max Pressure:** 350 bar.
- **Pressure Control:** DB, DBW 10 / 20 / 30 size
- **Flow Control:** FG, FCG, 2FRM, ZCG

### MODULAR VALVES



- **Modular Valves** are Stack Type which allows simplified mounting of Flow, Relief, Check & Motion Control Functions.
- **Model:** MSW, MRP, MBP, MPW
- **Size:** 06, 10 .

### PROPORTIONAL VALVES



- **Proportional Valves** allow Variable Flow & Pressure for Energy Saving Function
- **Max Flow:** 550 LPM
- **Max Pressure:** 250 bar.
- **Model:** PPR.
- **Size:** 01, 03, 06, 10

### YUCI YUKEN VALVES



- **Solenoid Valve:** DSG 01 to DSHG 03. i.e. Flow From: up to 1100 LPM. Pressure 315 bar.
- **Relief Valve:** BG, BSG, BT, SERIES. Flow: up to 650 LPM. Pressure 350 bar.
- **Modular Valve:** MPW, MSW, MRP, MBP SERIES. Flow: up to 400 LPM. Pressure 315 bar
- **Electro Proportional Valve:** EDG 01, EFBG 03/04/06/10. Flow Control: up to 500 LPM. Pressure 245 bar







## MOBILE CONTROL VALVES

### MONOBLOCK VALVES



- **Monoblock valve with 1 to 7 lever valves with inbuilt relief and check valve**
- **Flow:** 40/80/120 LPM
- **Pressure:** 315 bar.
- **Operation:** Single/Double Acting Cylinder and Motor Spool

### MONOBLOCK VALVES



- **Monoblock valve with 1 to 7 lever valves with inbuilt relief and check valve**
- **Flow:** 40/80/120 LPM
- **Pressure:** 315 bar.
- **Operation:** Micro-switch, Pneumatic, Joystick & Knock-out

### SECTIONAL VALVES



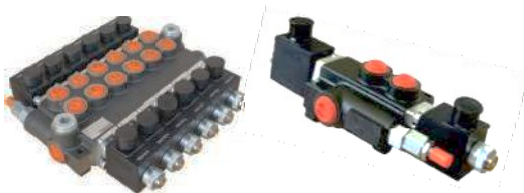
- **Sectional Valves with 1 to 10 levers and custom built**
- **Flow:** 40/80/120 LPM
- **Pressure:** 315 bar.
- **Operation:** Single/Double Acting Cylinder and Motor Spool

### SECTIONAL-ELECTRIC / PNEUMATIC



- **Sectional Valves with 1 to 10 levers and custom built**
- **Flow:** 40/80/120 LPM
- **Pressure:** 315 bar.
- **Operation:** Electric, Pneumatic, Joystick & Pilot Operated

### SOLENIOD CONTROL VALVES



- **Monoblock & Sectional Valve with 1 to 7 lever**
- **Flow:** 40/80/120 LPM
- **Pressure:** 315 bar.
- **Operation:** Single/Double
- **Type:** 12V & 24VDC

### PILOT OPERATED VALVES



- **Sectional Valve with 1 to 10 levers and custom built**
- **Flow:** 40/80/120 LPM
- **Pressure:** 315 bar.
- **Functions:** Pilot Operated with relief valve

### FLOW / DIVERTER VALVES



- **Control for multi-circuit applications**
- **Flow Capacity:** 100 LPM
- **Pressure:** 250 bar.

### HOSE BURST VALVE



- **The Hose Burst Valve is a flow operated flat seat valve.**
- **Direct Acting, Flat Seat Valve**
- **Size:** 1/4 to 3/4".
- **Pressure:** 350 bar.

### HYDRAULIC HOSE



- **Flexible rubber pipes used to transfer oil in system at high pressure**
- **Range:** 1/4" to 3"
- **Max Pressure:** 700 bar.
- **Types:** R1, R2, 4SP, 4SH.
- **Cover:** Smooth and Wrap.

### PTO PUMPS



- **Customized PTO Pumps as per standard gearbox**
- **Installed Gear Pumps**
- **Mechanical Push Pull Cable.**
- **With Complete kit.**

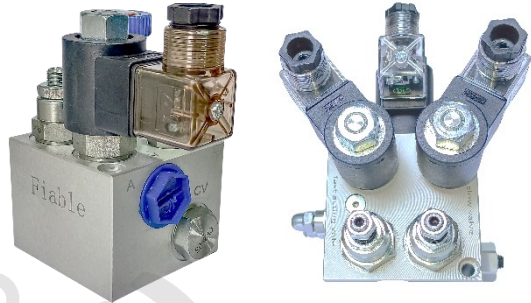


### CARTRIDGE VALVES



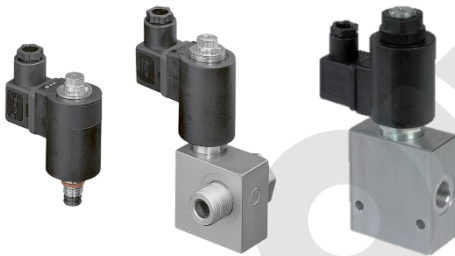
- **Directional:** 2/2, 3/2, 4/3 Way Position Valves, Check Valves, Pilot Check Valves.
- **Relief:** In-line, Pilot, Cartridge Style Valves.
- **Flow Control Valves**

### CATRTRIDGE BLOCK



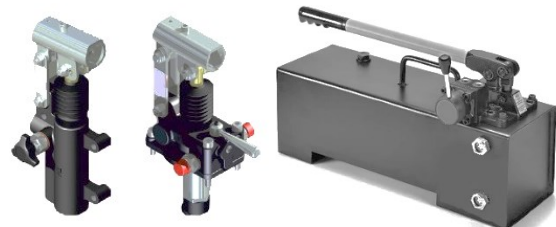
- **Flow:** 20, 40, 60 & 100 LPM available.
- **Max Pressure:** 250 bar.
- **Valves:** Check Valve, Relief Valve, Flow & Solenoid Valve.
- **Coil Voltage:** AC 220V, DC 12V, 24V.
- **Model:** CLB : 20 / 40 / 60 / 100 / 150.

### SOLENOID CHECK VALVES



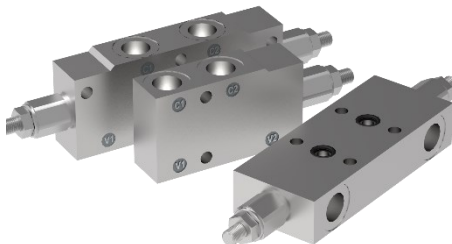
- **Poppet Type:** Single / Double.
- **Flow:** 30 LPM.
- **Pressure:** 200 bar.
- **Coil Voltage:** AC 220V, DC 12V, 24V.
- **Model:** DCV 18.5

### HANDPUMPS



- **Manual Hand Pumps used for moving Hydraulic Actuators.**
- **Displacement:** 8, 12, 25, 45, 70.
- **Type:** Piston, Cartridge.
- Tanks as per requirement.

### MOTION CONTROL VALVES



- **Control Valves used for protecting or holding loads in hydraulic circuit.**
- **Over Center Valve:** Up to 200 LPM.
- **Pilot Check Valves:** 3/8", 1/2".
- Priority Flow Control Valve, Inline Check Valves.



## Products we offer:

- Hydraulic Power Pack
- Hydraulic Cylinders
- Hydraulic Valves
- Hydraulic Pumps
- Hydraulic Motors
- Hydraulic Fittings



**Fiable Hydraulics**

## About Us :

**FIABLE HYDRAULICS PVT LTD - Top Hydraulic Power Packs & Hydraulic Cylinders Manufacturer**

Looking for reliable hydraulic power packs manufacturers? Fiable Hydraulics Pvt Ltd offers high-quality hydraulic power packs and hydraulic cylinders for various industrial applications.

FIABLE HYDRAULICS PVT. LTD is a Pune's well known company in the field of hydraulics. We are backed by a decade of experience in field of hydraulics, We have a state of art manufacturing facility of hydraulic fittings, hydraulic power units & hydraulic cylinders situated in CHAKAN, PUNE.

We have also developed compact AC & DC hydraulic power units and hydraulic cylinders widely used in garbage tippers.

We provide a one stop solutions for all hydraulic components needs of our customers.

## Fiable Hydraulics Pvt Ltd

INDUSTRIAL AREA, PHASE -II, Chakan, Wasuli, Maharashtra 410501

[fiablehydraulics@gmail.com](mailto:fiablehydraulics@gmail.com) / [+91 88065 52786](tel:+918806552786)